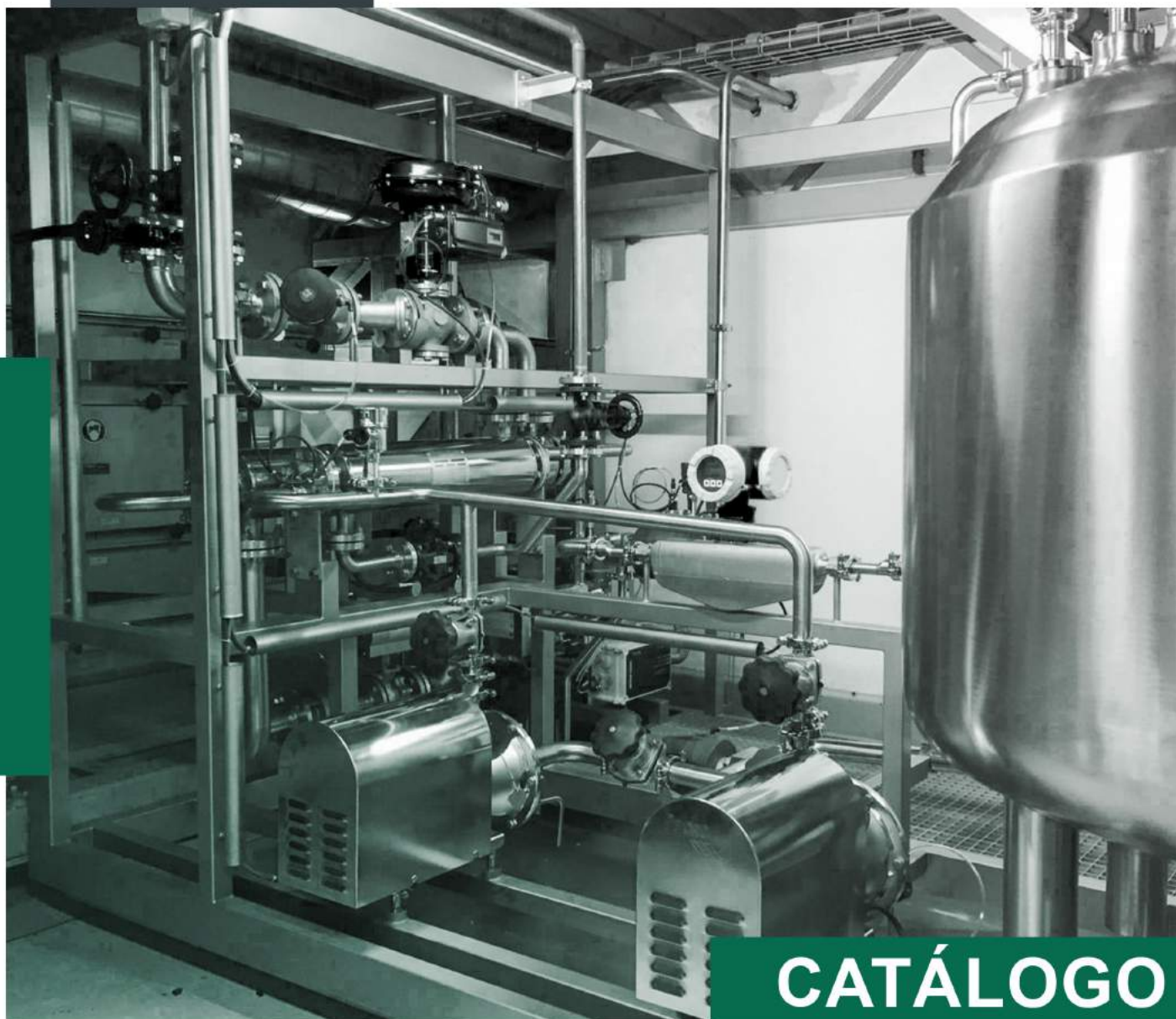


www.inoxbajio.com.mx

 **Inoxidables del Bajío**
Soluciones para Crecer



CATÁLOGO SANITARIO

Especialistas en el Suministro de Tubería, Válvulas y Conexiones de Acero Inoxidable y al Carbón para la industria.

Teléfonos:

01 (462) 62 511 38
01 (462) 62 517 51

Whatsapp:

(462) 254 77 09
(462) 595 59 68





Inoxidables del Bajío

Soluciones para Crecer

ESTAMOS UBICADOS ESTRATÉGICAMENTE EN EL CORAZÓN DEL BAJÍO

Con la finalidad de brindar el mejor al servicio a nuestros clientes hemos desarrollado procesos de abastecimiento que nos permiten entregarte los productos que necesites en el menor tiempo del mercado.

Índice

	Pág.
Introducción	1
Sanitario	2
Codos 90° Soldables	4
Codos 90° Clamp	4
Codo 45° Soldable	4
Codo 45° Clamp	5
Te Recta Soldable	5
Te Recta Clamp	5
Codo 90° Radio Largo	6
Cruz Soldable	6
Cruz Clamp	6
Reducción Concéntrica Soldable	7
Reducción Concéntrica Clamp	8
Reducción Excéntrica	9
Tapón Clamp	10
Tapón Cónico ACME	10
Ferrula Lisa Clamp	10
Férula Cónica Unión ACME	11
Ferrula Roscada Macho ACME	11
Ferrula Expander	12
Tuerca Unión Completa SMS	12
Tuerca Hexagonal Unión ACME	12
Adaptador Clamp Espiga p/ Manguera	13
Adaptador Clamp Rosca NTP Macho	13
Adaptador Clamp Rosca NTP Hembra	13
Abrazadera Clamp Dos Piezas	14
Abrazadera Clamp Alta Presión	14
Soporte Hexagonal c/a Goma	14
Soporte OMEGA	15
Válvula Mariposa Clamp	15
Válvula Mariposa Soldable	15
Válvula Bola Clamp	16
Válvula Check	16
Empaque para Unión Clamp	16
Brida Sanitaria Slip-On	17
Mirilla Clamp	17
Mirilla Ojo de Buey	17
Tubería Sanitaria	18

Inoxidables del Bajío

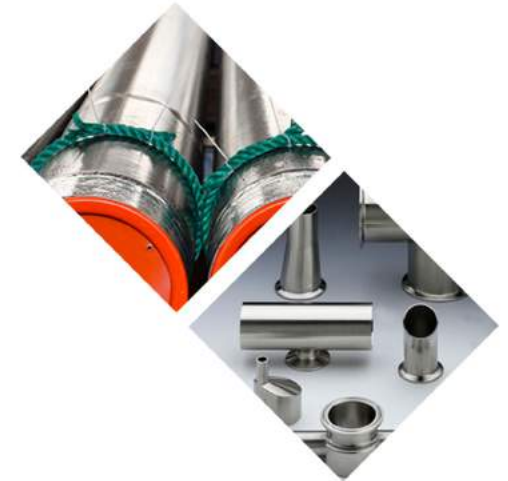
Soluciones para Crecer

SOMOS ESPECIALISTAS

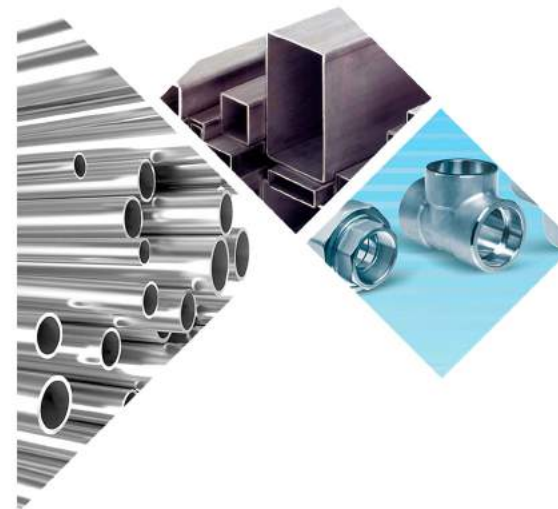
En el suministro de tubería, válvulas y conexiones de acero al carbón e inoxidable para la industria.

ESTAMOS UBICADOS ESTRATÉGICAMENTE EN EL CORAZÓN DEL BAJÍO.

Con la finalidad de brindar el mejor al servicio a nuestros clientes hemos desarrollado procesos de abastecimiento que nos permiten entregarte los productos que necesites en el menor tiempo del mercado.



De igual forma aprovechamos el expertise de nuestros ingenieros para seleccionar las mejores soluciones para tus necesidades, eligiendo entre los mejores productos para asegurar el cumplimiento de las especificaciones más estrictas.



Catálogo Inoxbajo
Sanitario

PRODUCTOS SANITARIOS



SANITARIOS

Descripción:

Las conexiones sanitarias son usadas principalmente en líneas de proceso para la elaboración de alimentos, bebidas, lácteos, cosméticos y productos farmacéuticos.

Existen distintos tipos de conexiones sanitarias, pero las más usadas en México son las fabricadas bajo la norma 3A, las cuales pueden ser:

- Conexiones sanitarias SOLDABLES:

Son conexiones soldables a tope y son usadas para líneas de proceso permanentes que no serán desmontadas, son altamente higiénicas debido a la continuidad de la línea.

- Conexiones sanitarias CLAMP:

Son todas las conexiones que cuentan con una férula soldada a los extremos, la cual permite un montaje y/o desmontaje más rápido y flexible, sin sacrificar higiene ni seguridad.



Estándares de fabricación: ASTM A269, ASTM A270, 3-A pulidos 180gr en los tipos 304 y 316L, y ASME BPE.

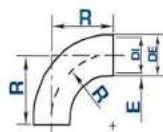
Acabados: Interior desde 32 μ -pulg hasta 10 μ -pulg con procesos de pulido mecánico y electropulido. Exterior en 32 μ -pulg.

Diámetros: Desde 1/2" hasta 8" (en tubería OD los diámetros exteriores son iguales a los nominales).

ELEMENTO	REQUERIMIENTOS MAXIMOS EN %			
	Al 304	Al 304L	Al 316	Al 316L
CABONO (C)	0.08	0.035	0.08	0.035
MANGANESO (Mn)	2.0	2.0	2.0	2.0
FOSFORO (P)	0.045	0.045	0.045	0.045
AZUFRE (S)	0.030	0.030	0.030	0.030
SILICIO (Si)	1.0	1.0	1.0	1.0
NIQUEL (Ni)	8.0 - 11.0	8.0 - 12.0	10.0 - 14.0	10.0 - 14.0
CROMO (Cr)	18.0 - 20.0	18.0 - 20.0	16.0 - 18.0	16.0 - 18.0
MOLIBDENO (Mo)	N/A	N/A	2.0 - 3.0	2.0 - 3.0
FIERRO (Fe) Y OTRO	% Restante	% Restante	% Restante	% Restante



Codos de 90° Extremos Soldables Tipo 304 / 316L



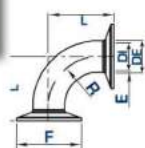
TAMAÑO NOMINAL	DE	DI	E	R
inches	mm	inches	mm	inches
1/2"	0.500"	0.370"	0.065"	1.665"
3/4"	0.750"	0.620"	0.065"	1.665"
1"	1.000"	0.870"	0.065"	1.665"
1-1/2"	1.500"	1.370"	0.065"	1.665"
2"	2.000"	1.870"	0.065"	1.665"
2-1/2"	2.500"	2.370"	0.065"	1.665"
3"	3.000"	2.870"	0.065"	1.665"
4"	4.000"	3.834"	0.083"	2.111"
6"	6.000"	5.782"	0.109"	2.777"



Codos de 45° Extremos CLAMP Tipo 304 / 316L

TAMAÑO NOMINAL	DE	DI	E	R	L	F
inches	mm	inches	mm	inches	mm	inches
1/2"	0.500"	0.370"	0.065"	1.665"	1.000"	2.540"
3/4"	0.750"	0.620"	0.065"	1.665"	1.125"	28.58
1"	1.000"	0.870"	0.065"	1.665"	1.250"	28.58
1-1/2"	1.500"	1.370"	0.065"	1.665"	2.250"	57.15
2"	2.000"	1.870"	0.065"	1.665"	3.000"	76.20
2-1/2"	2.500"	2.370"	0.065"	1.665"	3.750"	95.25
3"	3.000"	2.870"	0.065"	1.665"	4.500"	114.30
4"	4.000"	3.834"	0.083"	2.111"	6.000"	152.40
6"	6.000"	5.782"	0.109"	2.777"	9.000"	228.60

Codos de 90° Extremos CLAMP Tipo 304 / 316L



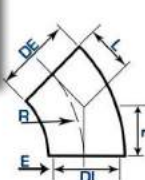
TAMAÑO NOMINAL	DE	DI	E	R	L	F
inches	mm	inches	mm	inches	mm	inches
1/2"	0.500"	0.370"	0.065"	1.665"	1.250"	31.75
3/4"	0.750"	0.620"	0.065"	1.665"	1.625"	41.28
1"	1.000"	0.870"	0.065"	1.665"	2.000"	50.80
1-1/2"	1.500"	1.370"	0.065"	1.665"	2.750"	69.85
2"	2.000"	1.870"	0.065"	1.665"	3.500"	88.90
2-1/2"	2.500"	2.370"	0.065"	1.665"	4.250"	107.95
3"	3.000"	2.870"	0.065"	1.665"	5.000"	127.00
4"	4.000"	3.834"	0.083"	2.111"	6.875"	174.63
6"	6.000"	5.782"	0.109"	2.777"	9.875"	250.83



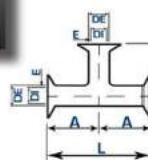
Te Recta Extremos Soldables Tipo 304 / 316L

TAMAÑO NOMINAL	DE	DI	E	A	B	L
inches	mm	inches	mm	inches	mm	inches
1/2"	0.500"	0.370"	0.065"	1.665"	1.875"	47.63
3/4"	0.750"	0.620"	0.065"	1.665"	1.875"	47.63
1"	1.000"	0.870"	0.065"	1.665"	1.875"	47.63
1-1/2"	1.500"	1.370"	0.065"	1.665"	2.250"	57.15
2"	2.000"	1.870"	0.065"	1.665"	3.000"	76.20
2-1/2"	2.500"	2.370"	0.065"	1.665"	3.000"	76.20
3"	3.000"	2.870"	0.065"	1.665"	3.250"	82.55
4"	4.000"	3.834"	0.083"	2.111"	3.875"	98.43
6"	6.000"	5.782"	0.109"	2.777"	5.000"	127.00

Codos de 45° Extremos Soldables Tipo 304 / 316L



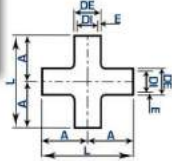
TAMAÑO NOMINAL	DE	DI	E	R	L
inches	mm	inches	mm	inches	mm
1/2"	0.500"	0.370"	0.065"	1.665"	0.500"
3/4"	0.750"	0.620"	0.065"	1.665"	0.625"
1"	1.000"	0.870"	0.065"	1.665"	0.750"
1-1/2"	1.500"	1.370"	0.065"	1.665"	1.125"
2"	2.000"	1.870"	0.065"	1.665"	1.500"
2-1/2"	2.500"	2.370"	0.065"	1.665"	1.875"
3"	3.000"	2.870"	0.065"	1.665"	2.250"
4"	4.000"	3.834"	0.083"	2.111"	2.500"
6"	6.000"	5.782"	0.109"	2.777"	3.750"



Te Recta Extremos CLAMP Tipo 304 / 316L

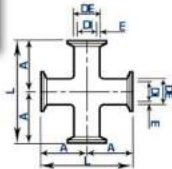
TAMAÑO NOMINAL	DE	DI	E	A	B	L
inches	mm	inches	mm	inches	mm	inches
1/2"	0.500"	0.370"	0.065"	1.665"	1.250"	31.75
3/4"	0.750"	0.620"	0.065"	1.665"	1.375"	34.93
1"	1.000"	0.870"	0.065"	1.665"	1.500"	38.10
1-1/2"	1.500"	1.370"	0.065"	1.665"	2.125"	53.98
2"	2.000"	1.870"	0.065"	1.665"	2.750"	69.85
2-1/2"	2.500"	2.370"	0.065"	1.665"	3.000"	76.20
3"	3.000"	2.870"	0.065"	1.665"	3.250"	82.55
4"	4.000"	3.834"	0.083"	2.111"	4.500"	114.30
6"	6.000"	5.782"	0.109"	2.777"	6.875"	174.63

Cruz Soldable
Tipo 304



TAMAÑO NOMINAL	DE	DI	E	A	L
inches	mm	inches	mm	inches	mm
1/2"	0.500"	0.370"	0.065"	1.875"	4.500"
3/4"	0.750"	0.620"	0.065"	1.875"	4.500"
1"	1.000"	0.870"	0.065"	1.875"	4.500"
1-1/2"	1.500"	1.370"	0.065"	2.250"	5.500"
2"	2.000"	1.870"	0.065"	3.000"	7.500"
2-1/2"	2.500"	2.370"	0.065"	3.000"	7.500"
3"	3.000"	2.870"	0.065"	3.250"	8.000"
4"	4.000"	3.834"	0.063"	3.875"	9.500"
6"	6.000"	5.782"	0.109"	5.000"	12.500"

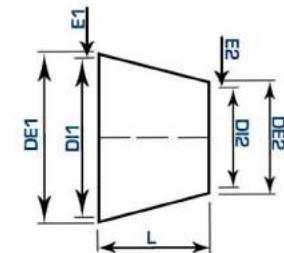
Cruz CLAMP
Tipo 304



TAMAÑO NOMINAL	DE	DI	E	A	L
inches	mm	inches	mm	inches	mm
1/2"	0.500"	0.370"	0.065"	2.250"	5.715"
3/4"	0.750"	0.620"	0.065"	2.375"	6.033"
1"	1.000"	0.870"	0.065"	2.375"	6.033"
1-1/2"	1.500"	1.370"	0.065"	2.750"	6.965"
2"	2.000"	1.870"	0.065"	3.500"	8.910"
2-1/2"	2.500"	2.370"	0.065"	3.500"	8.910"
3"	3.000"	2.870"	0.065"	3.750"	9.525"
4"	4.000"	3.834"	0.063"	4.500"	11.430"
6"	6.000"	5.782"	0.109"	5.875"	14.925"

Reducción Concéntrica Soldable
Tipo 304 / 316L

TAMAÑO NOMINAL	DE1	DI1	E1	DE2	DI2	E2	L
inches	mm	inches	mm	inches	mm	inches	mm
3/4" x 1/2"	0.500"	0.370"	0.065"	0.500"	0.370"	0.065"	1.000"
1" x 1/2"	1.000"	0.870"	0.065"	0.500"	0.370"	0.065"	1.000"
1 x 3/4"	1.000"	0.870"	0.065"	0.750"	0.620"	0.065"	1.000"
1-1/2" x 1/2"	1.500"	1.370"	0.065"	0.500"	0.370"	0.065"	2.500"
1-1/2" x 3/4"	1.500"	1.370"	0.065"	0.750"	0.620"	0.065"	2.000"
1-1/2" x 1"	1.500"	1.370"	0.065"	1.000"	0.870"	0.065"	2.000"
2" x 1/2"	2.000"	1.870"	0.065"	0.500"	0.370"	0.065"	4.500"
2" x 3/4"	2.000"	1.870"	0.065"	0.750"	0.620"	0.065"	4.000"
2" x 1"	2.000"	1.870"	0.065"	1.000"	0.870"	0.065"	4.000"
2" x 1-1/2"	2.000"	1.870"	0.065"	1.500"	1.370"	0.065"	2.000"
2-1/2" x 1/2"	2.500"	2.370"	0.065"	0.500"	0.370"	0.065"	6.500"
2-1/2" x 3/4"	2.500"	2.370"	0.065"	0.750"	0.620"	0.065"	6.000"
2-1/2" x 1"	2.500"	2.370"	0.065"	1.000"	0.870"	0.065"	6.000"
2-1/2" x 1-1/2"	2.500"	2.370"	0.065"	1.500"	1.370"	0.065"	4.000"
2-1/2" x 2"	2.500"	2.370"	0.065"	2.000"	1.870"	0.065"	2.000"
3" x 1/2"	3.000"	2.870"	0.065"	0.500"	0.370"	0.065"	8.500"
3" x 3/4"	3.000"	2.870"	0.065"	0.750"	0.620"	0.065"	8.000"
3" x 1"	3.000"	2.870"	0.065"	1.000"	0.870"	0.065"	8.000"
3" x 1-1/2"	3.000"	2.870"	0.065"	1.500"	1.370"	0.065"	6.000"
3" x 2"	3.000"	2.870"	0.065"	2.000"	1.870"	0.065"	4.000"
3" x 2-1/2"	3.000"	2.870"	0.065"	2.500"	2.370"	0.065"	2.000"
4" x 1"	4.000"	3.834"	0.063"	1.000"	0.870"	0.065"	12.000"
4" x 1-1/2"	4.000"	3.834"	0.063"	1.500"	1.370"	0.065"	10.000"
4" x 2"	4.000"	3.834"	0.063"	2.000"	1.870"	0.065"	8.000"
4" x 2-1/2"	4.000"	3.834"	0.063"	2.500"	2.370"	0.065"	6.000"
4" x 3"	4.000"	3.834"	0.063"	3.000"	2.870"	0.065"	4.000"
6" x 2"	6.000"	5.782"	0.109"	2.000"	1.870"	0.065"	5.500"
6" x 3"	6.000"	5.782"	0.109"	3.000"	2.870"	0.065"	5.500"
6" x 4"	6.000"	5.782"	0.109"	4.000"	3.834"	0.063"	2.11"

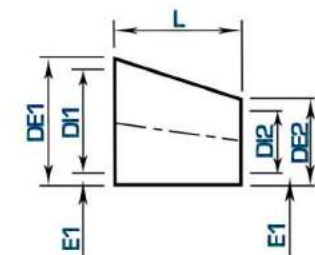
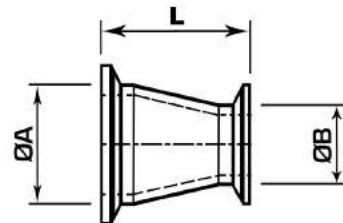


Reducción Concéntrica CLAMP
Tipo 304 / 316L

Reducción Excéntrica
Tipo 304 / 316L

TAMAÑO NOMINAL	DE1		DI1		E1		DE2		DI2		E2		L	
	inche	mm	inche	mm	inche	mm	inche	mm	inche	mm	inche	mm	mm	
3/4" x 1/2"	0.500"	12.70	0.370"	9.40	0.065"	1.65	0.500"	12.70	0.370"	9.40	0.065"	1.65	2.000"	50.80
1" x 1/2"	1.000"	25.40	0.870"	22.10	0.065"	1.65	0.500"	12.70	0.370"	9.40	0.065"	1.65	2.500"	63.50
1 x 3/4"	1.000"	25.40	0.870"	22.10	0.065"	1.65	0.750"	19.05	0.620"	15.75	0.065"	1.65	2.000"	50.80
1 - 1/2" x 1/2"	1.500"	38.10	1.370"	34.80	0.065"	1.65	0.500"	12.70	0.370"	9.40	0.065"	1.65	3.500"	88.90
1 - 1/2" x 3/4"	1.500"	38.10	1.370"	34.80	0.065"	1.65	0.750"	19.05	0.620"	15.75	0.065"	1.65	3.000"	76.20
1 - 1/2" x 1"	1.500"	38.10	1.370"	34.80	0.065"	1.65	1.000"	25.40	0.870"	22.10	0.065"	1.65	3.000"	76.20
2" x 1/2"	2.000"	50.80	1.870"	47.50	0.065"	1.65	0.500"	12.70	0.370"	9.40	0.065"	1.65	5.500"	139.70
2" x 3/4"	2.000"	50.80	1.870"	47.50	0.065"	1.65	0.750"	19.05	0.620"	15.75	0.065"	1.65	5.000"	127.00
2" x 1"	2.000"	50.80	1.870"	47.50	0.065"	1.65	1.000"	25.40	0.870"	22.10	0.065"	1.65	5.000"	127.00
2" x 1-1/2"	2.000"	50.80	1.870"	47.50	0.065"	1.65	1.500"	38.10	1.370"	34.80	0.065"	1.65	3.000"	76.20
2 - 1/2" x 1"	2.500"	63.50	2.370"	60.20	0.065"	1.65	1.000"	25.40	0.870"	22.10	0.065"	1.65	7.000"	177.80
2 - 1/2" x 1-1/2"	2.500"	63.50	2.370"	60.20	0.065"	1.65	1.500"	38.10	1.370"	34.80	0.065"	1.65	5.000"	127.00
2 - 1/2" x 2"	2.500"	63.50	2.370"	60.20	0.065"	1.65	2.000"	50.80	1.870"	47.50	0.065"	1.65	3.000"	76.20
3" x 1"	3.000"	76.20	2.870"	72.90	0.065"	1.65	1.000"	25.40	0.370"	9.40	0.065"	1.65	9.000"	228.60
3" 1-1/2"	3.000"	76.20	2.870"	72.90	0.065"	1.65	1.500"	38.10	1.370"	34.80	0.065"	1.65	7.000"	177.80
3" x 2"	3.000"	76.20	2.870"	72.90	0.065"	1.65	2.000"	50.80	1.870"	47.50	0.065"	1.65	5.000"	127.00
3" x 2-1/2"	3.000"	76.20	2.870"	72.90	0.065"	1.65	2.500"	63.50	2.370"	60.20	0.065"	1.65	3.000"	76.20
4" x 1"	4.000"	101.60	3.834"	97.38	0.083"	2.11	1.000"	25.40	0.870"	22.10	0.065"	1.65	13.125"	333.38
4" x 1-1/2"	4.000"	101.60	3.834"	97.38	0.083"	2.11	1.500"	38.10	1.370"	34.80	0.065"	1.65	11.125"	282.58
4" x 2"	4.000"	101.60	3.834"	97.38	0.083"	2.11	2.000"	50.80	1.870"	47.50	0.065"	1.65	9.125"	231.78
4" x 2-1/2"	4.000"	101.60	3.834"	97.38	0.083"	2.11	2.500"	63.50	2.370"	60.20	0.065"	1.65	7.125"	180.98
4" x 3"	4.000"	101.60	3.834"	97.38	0.083"	2.11	3.000"	76.20	2.870"	72.90	0.065"	1.65	5.125"	130.18
6" x 3"	6.000"	152.40	5.782"	146.86	0.109"	2.77	3.000"	76.20	2.870"	72.90	0.065"	1.65	7.500"	190.50
6" x 4"	6.000"	152.40	5.782"	146.86	0.109"	2.77	4.000"	101.60	3.834"	97.38	0.083"	2.11	7.625"	193.68

TAMAÑO NOMINAL	DE1		DI1		E1		DE2		DI2		E2		L	
	inche	mm	inche	mm	inche	mm	inche	mm	inche	mm	inche	mm	mm	
3/4" x 1/2"	0.500"	12.70	0.370"	9.40	0.065"	1.65	0.500"	12.70	0.370"	9.40	0.065"	1.65	1.000"	25.40
1" x 1/2"	1.000"	25.40	0.870"	22.10	0.065"	1.65	0.500"	12.70	0.370"	9.40	0.065"	1.65	1.000"	25.40
1 x 3/4"	1.000"	25.40	0.870"	22.10	0.065"	1.65	0.750"	19.05	0.620"	15.75	0.065"	1.65	1.000"	25.40
1 - 1/2" x 1/2"	1.500"	38.10	1.370"	34.80	0.065"	1.65	0.500"	12.70	0.370"	9.40	0.065"	1.65	2.500"	63.50
1 - 1/2" x 3/4"	1.500"	38.10	1.370"	34.80	0.065"	1.65	0.750"	19.05	0.620"	15.75	0.065"	1.65	2.000"	50.80
1 - 1/2" x 1"	1.500"	38.10	1.370"	34.80	0.065"	1.65	1.000"	25.40	0.870"	22.10	0.065"	1.65	2.000"	50.80
2" x 1/2"	2.000"	50.80	1.870"	47.50	0.065"	1.65	0.500"	12.70	0.370"	9.40	0.065"	1.65	4.500"	114.30
2" x 3/4"	2.000"	50.80	1.870"	47.50	0.065"	1.65	0.750"	19.05	0.620"	15.75	0.065"	1.65	4.000"	101.60
2" x 1"	2.000"	50.80	1.870"	47.50	0.065"	1.65	1.000"	25.40	0.870"	22.10	0.065"	1.65	4.000"	101.60
2" x 1-1/2"	2.000"	50.80	1.870"	47.50	0.065"	1.65	1.500"	38.10	1.370"	34.80	0.065"	1.65	2.000"	50.80
2 - 1/2" x 1"	2.500"	63.50	2.370"	60.20	0.065"	1.65	1.000"	25.40	0.870"	22.10	0.065"	1.65	6.500"	165.10
2 - 1/2" x 1-1/2"	2.500"	63.50	2.370"	60.20	0.065"	1.65	1.500"	38.10	1.370"	34.80	0.065"	1.65	6.000"	152.40
2 - 1/2" x 2"	2.500"	63.50	2.370"	60.20	0.065"	1.65	2.000"	50.80	1.870"	47.50	0.065"	1.65	6.000"	152.40
2 - 1/2" x 1-1/2"	2.500"	63.50	2.370"	60.20	0.065"	1.65	1.000"	25.40	0.870"	22.10	0.065"	1.65	6.000"	152.40
2 - 1/2" x 2"	2.500"	63.50	2.370"	60.20	0.065"	1.65	2.000"	50.80	1.870"	47.50	0.065"	1.65	2.000"	50.80
3" x 1/2"	3.000"	76.20	2.870"	72.90	0.065"	1.65	0.500"	12.70	0.370"	9.40	0.065"	1.65	8.500"	215.90
3" x 3/4"	3.000"	76.20	2.870"	72.90	0.065"	1.65	0.750"	19.05	0.620"	15.75	0.065"	1.65	8.000"	203.20
3" x 1"	3.000"	76.20	2.870"	72.90	0.065"	1.65	1.000"	25.40	0.870"	22.10	0.065"	1.65	8.000"	203.20
3" 1-1/2"	3.000"	76.20	2.870"	72.90	0.065"	1.65	1.500"	38.10	1.370"	34.80	0.065"	1.65	6.000"	152.40
3" x 2"	3.000"	76.20	2.870"	72.90	0.065"	1.65	2.000"	50.80	1.870"	47.50	0.065"	1.65	4.000"	101.60
3" x 2-1/2"	3.000"	76.20	2.870"	72.90	0.065"	1.65	2.500"	63.50	2.370"	60.20	0.065"	1.65	2.000"	50.80
4" x 1"	4.000"	101.60	3.834"	97.38	0.083"	2.11	1.000"	25.40	0.870"	22.10	0.065"	1.65	12.000"	304.80
4" x 1-1/2"	4.000"	101.60	3.834"	97.38	0.083"	2.11	1.500"	38.10	1.370"	34.80	0.065"	1.65	10.000"	254.00
4" x 2"	4.000"	101.60	3.834"	97.38	0.083"	2.11	2.000"	50.80	1.870"	47.50	0.065"	1.65	8.000"	203.20
4" x 2-1/2"	4.000"	101.60	3.834"	97.38	0.083"	2.11	2.500"	63.50	2.370"	60.20	0.065"	1.65	6.000"	152.40
4" x 3"	4.000"	101.60	3.834"	97.38	0.083"	2.11	3.000"	76.20	2.870"	72.90	0.065"	1.65	4.000"	101.60
6" x 2"	6.000"	152.40	5.782"	146.86	0.109"	2.77	2.000"	50.80	1.870"	47.50	0.065"	1.65	5.500"	139.70
6" x 3"	6.000"	152.40	5.782"	146.86	0.109"	2.77	3.000"	76.20	2.870"	72.90	0.065"	1.65	5.500"	139.70
6" x 4"	6.000"	152.40	5.782"	146.86	0.109"	2.77	4.000"	101.60	3.834"	97.38	0.083"	2.11	5.500"	139.70

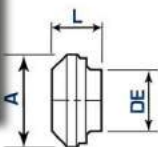


Tapón CLAMP
Tipo 304 / 316L



TAMAÑO NOMINAL	L		F	
	inche	mm	inche	mm
1/2"	0.250"	6.35	1.000"	25.40
3/4"	0.250"	6.35	1.000"	25.40
1"	0.250"	6.35	1.984"	50.39
1-1/2"	0.250"	6.35	1.984"	50.39
2"	0.250"	6.35	2.516"	63.91
2-1/2"	0.250"	6.35	3.047"	77.39
3"	0.250"	6.35	3.579"	90.91
4"	0.313"	7.94	4.682"	118.92
6"	0.438"	11.11	6.571"	166.90

Tapón Cónico ACME
Tipo 304 / 316L



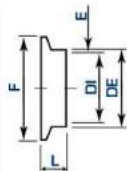
TAMAÑO NOMINAL	DE		A		L	
	inche	mm	inche	mm	inche	mm
1"	1.000"	25.40	1.310"	33.27	0.690"	17.53
1-1/2"	1.500"	38.10	1.840"	46.74	0.690"	17.53
2"	2.000"	50.80	2.380"	60.45	0.720"	18.29
2-1/2"	2.500"	63.50	2.910"	73.91	0.840"	21.34
3"	3.000"	76.20	3.440"	87.38	0.940"	23.88
4"	4.000"	101.60	4.500"	114.30	1.220"	30.99

Ferrula Lisa CLAMP
Tipo 304 / 316L

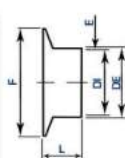
TAMAÑO NOMINAL	DE		DI		E		F	
	inche	mm	inche	mm	inche	mm	inche	mm
1/2"	0.500"	12.70	0.370"	9.40	0.065"	1.65	1.000"	25.40
3/4"	0.750"	19.05	0.620"	15.75	0.065"	1.65	1.000"	25.40
1"	1.000"	25.40	0.870"	22.10	0.065"	1.65	1.984"	50.39
1-1/2"	1.500"	38.10	1.370"	34.80	0.065"	1.65	1.984"	50.39
2"	2.000"	50.80	1.870"	47.50	0.065"	1.65	2.516"	63.91
2-1/2"	2.500"	63.50	2.370"	60.20	0.065"	1.65	3.047"	77.39
3"	3.000"	76.20	2.870"	72.90	0.065"	1.65	3.579"	90.91
4"	4.000"	101.60	3.834"	97.38	0.083"	2.11	4.682"	118.92
6"	6.000"	152.40	5.782"	146.86	0.109"	2.77	6.571"	166.90

L Ferrula Larga: 1-1/8

Corta:



Larga:

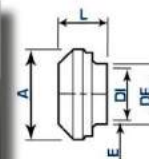


Ferrula Cónica Unión ACME
Tipo 304 / 316L

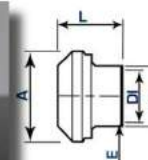
TAMAÑO NOMINAL	DE		DI		E		A	
	inche	mm	inche	mm	inche	mm	inche	mm
1"	1.000"	25.40	0.870"	22.10	0.065"	1.65	1.310"	33.27
1-1/2"	1.500"	38.10	1.370"	34.80	0.065"	1.65	1.840"	46.74
2"	2.000"	50.80	1.870"	47.50	0.065"	1.65	2.380"	60.45
2-1/2"	2.500"	63.50	2.370"	60.20	0.065"	1.65	2.910"	73.91
3"	3.000"	76.20	2.870"	72.90	0.065"	1.65	3.440"	87.38
4"	4.000"	101.60	3.834"	97.38	0.083"	2.11	4.500"	114.30

L Ferrula Larga: 1-1/8

Corta:



Larga:

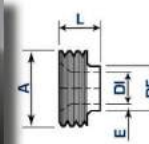


Ferrula Roscada Macho ACME
Tipo 304 / 316L

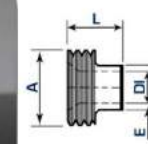
TAMAÑO NOMINAL	DE		DI		E		A	
	inche	mm	inche	mm	inche	mm	inche	mm
1"	1.000"	25.40	0.870"	22.10	0.065"	1.65	RD 1.5" x 18"	
1-1/2"	1.500"	38.10	1.370"	34.80	0.065"	1.65	RD 2.0" x 18"	
2"	2.000"	50.80	1.870"	47.50	0.065"	1.65	RD 2.5" x 18"	
2-1/2"	2.500"	63.50	2.370"	60.20	0.065"	1.65	RD 3.1" x 18"	
3"	3.000"	76.20	2.870"	72.90	0.065"	1.65	RD 3.6" x 18"	
4"	4.000"	101.60	3.834"	97.38	0.083"	2.11	RD 4.7" x 18"	

L Ferrula Larga: 1-1/8

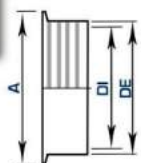
Corta:



Larga:

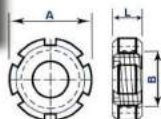


Ferrula Expander
Tipo 304 / 316L



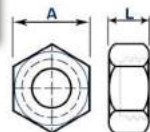
TAMAÑO NOMINAL	inche	DE mm	inche	DI mm	inche	A mm
1"	1.000"	25.40	1.310"	33.27	1.988"	50.5
1-1/2"	1.500"	38.10	1.840"	46.74	1.988"	50.5
2"	2.000"	50.80	2.380"	60.45	2.519"	64.0
2-1/2"	2.500"	63.50	2.910"	73.91	3.051"	77.5
3"	3.000"	76.20	3.440"	87.38	3.582"	91.0
4"	4.000"	101.60	4.500"	114.30	4.685"	119.0

Tuerca Unión Completa SMS
Tipo 304



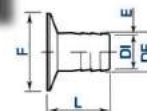
TAMAÑO NOMINAL	inche	A mm	inche	B mm	inche	C mm	inche	L mm
1"	2.008"	51.00	1.260"	32.00	RD 40 x 1.6"	0.748"	19.00	
1-1/2"	2.913"	74.00	1.860"	46.00	RD 60 x 1.6"	0.903"	23.00	
2"	3.307"	84.00	2.362"	60.50	RD 70 x 1.6"	0.945"	24.00	
2-1/2"	3.697"	100.00	2.913"	74.00	RD 85 x 1.6"	1.102"	28.00	
3"	4.488"	114.00	3.425"	87.00	RD 96 x 1.6"	1.181"	30.00	
4"	5.039"	128.00	4.449"	113.00	RD 125 x 1.6"	1.220"	31.00	

Tuerca Hexagonal Unión ACME
Tipo 304 / 316L



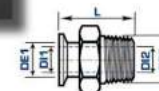
TAMAÑO NOMINAL	inche	A mm	inche	L mm
1"	1.810"	45.97	0.910"	23.11
1-1/2"	2.410"	61.21	0.970"	24.64
2"	3.000"	76.20	1.060"	26.92
2-1/2"	3.590"	91.19	1.190"	30.23
3"	4.190"	106.43	1.280"	32.51
4"	5.440"	138.18	1.500"	38.10

Adaptador CLAMP Espiga p/ Manguera
Tipo 304



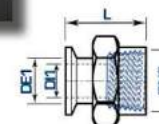
TAMAÑO NOMINAL	inche	DE mm	inche	DI mm	inche	E mm	inche	L mm	inche	F mm
1/2"	0.500"	12.70	0.370"	9.40	0.065"	1.65	2.000"	50.80	1.000"	25.40
3/4"	0.750"	19.05	0.620"	15.75	0.065"	1.65	2.000"	50.80	1.000"	25.40
1"	1.000"	25.40	0.870"	22.10	0.065"	1.65	2.500"	63.50	1.984"	50.38
1-1/2"	1.500"	38.10	1.370"	34.80	0.065"	1.65	2.500"	63.50	1.984"	50.38
2"	2.000"	50.80	1.870"	47.50	0.065"	1.65	2.500"	63.50	2.516"	63.91
2-1/2"	2.500"	63.50	2.370"	60.20	0.065"	1.65	3.000"	76.20	3.047"	77.38
3"	3.000"	76.20	2.870"	72.90	0.065"	1.65	3.000"	76.20	3.579"	90.91

Adaptador CLAMP Rosca NPT Macho
Tipo 304



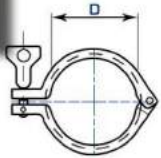
TAMAÑO NOMINAL	inche	DE1 mm	inche	DI1 mm	inche	DE2 mm	inche	DI2 mm	inche	L mm
1/2"	0.500"	12.70	0.370"	9.40	0.840"	21.34	0.548"	13.87	2.000"	50.80
3/4"	0.750"	19.05	0.620"	15.75	1.050"	26.67	0.742"	18.85	2.000"	50.80
1"	1.000"	25.40	0.870"	22.10	1.315"	33.40	0.967"	24.51	2.250"	57.15
1-1/2"	1.500"	38.10	1.370"	34.80	1.900"	48.26	1.500"	38.10	2.440"	61.88
2"	2.000"	50.80	1.870"	47.50	2.375"	60.33	1.939"	49.25	2.960"	67.56
2-1/2"	2.500"	63.50	2.370"	60.20	2.875"	73.03	2.323"	59.00	3.280"	83.31
3"	3.000"	76.20	2.870"	72.90	3.500"	88.90	2.900"	73.66	3.500"	88.90
4"	4.000"	101.60	3.634"	92.38	4.500"	114.30	3.828"	97.77	3.810"	96.77

Adaptador CLAMP Rosca NPT Hembra
Tipo 304



TAMAÑO NOMINAL	inche	DE1 mm	inche	DI1 mm	inche	DN2 mm	inche	L mm
1/2"	0.500"	12.70	0.370"	9.40	0.840"	21.34	2.000"	50.80
3/4"	0.750"	19.05	0.620"	15.75	1.050"	26.67	2.125"	53.98
1"	1.000"	25.40	0.870"	22.10	1.315"	33.40	1.625"	41.28
1-1/2"	1.500"	38.10	1.370"	34.80	1.900"	48.26	2.250"	57.15
2"	2.000"	50.80	1.870"	47.50	2.375"	60.33	2.340"	59.44
2-1/2"	2.500"	63.50	2.370"	60.20	2.875"	73.03	2.620"	66.55
3"	3.000"	76.20	2.870"	72.90	3.500"	88.90	2.880"	73.15
4"	4.000"	101.60	3.634"	92.38	4.500"	114.30	3.000"	76.20

Abrazadera CLAMP Dos Piezas
Tipo 304



TAMAÑO NOMINAL	inche	D mm	Presión Máx 38°C	psi	Kg/cm ²	Presión Máx 121°C	psi	Kg/cm ²
1/2"=3/4"	1.125"	28.58	200	14.1	165	11.6		
1"-1-1/2"	2.125"	53.98	200	14.1	165	11.6		
2"	2.656"	67.47	200	14.1	165	11.6		
2-1/2"	3.185"	80.90	200	14.1	165	11.6		
3"	3.719"	94.46	200	14.1	150	10.5		
4"	4.820"	122.43	200	14.1	125	8.8		
6"	6.695"	170.05	150	10.5	75	5.3		

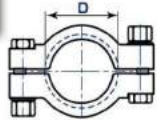
Referencia: ASME DPC 2005, Tabla D1-2 Higiene Unions



Soporte OMEGA
Tipo 304

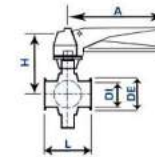
CLAVE	TAMAÑO NOMINAL	inche	DE mm
DMI OMEGA 5	1/2"	0.500"	12.70
DMI OMEGA 7	3/4"	0.750"	19.05
DMI OMEGA 10	1"	1.000"	25.40
DMI OMEGA 15	1-1/2"	1.500"	38.10
DMI OMEGA 20	2"	2.000"	50.80
DMI OMEGA 25	2-1/2"	2.500"	63.50
DMI OMEGA 30	3"	3.000"	76.20
DMI OMEGA 40	4"	4.000"	101.60

Abrazadera CLAMP Alta Presión
Tipo 304



TAMAÑO NOMINAL	inche	D mm	Presión Máx 38°C	psi	Kg/cm ²	Presión Máx 121°C	psi	Kg/cm ²
1"-1-1/2"	2.046"	51.97	1500	105.5	1200	84.4		
2"	2.576"	65.48	1000	70.3	800	56.3		
2-1/2"	3.110"	78.99	1000	70.3	800	56.3		
3"	3.640"	92.48	1000	70.3	800	56.3		
4"	4.744"	120.50	1000	70.3	800	56.3		

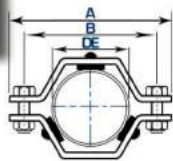
Referencia: ASME DPC 2005, Tabla D1-2 Higiene Unions



Válvula Mariposa CLAMP
Tipo 304 / 316L

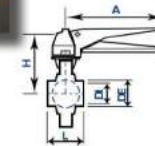
TAMAÑO NOMINAL	inche	DE mm	DI mm	L mm	H mm	A mm				
1"	1.984"	50.4	0.980"	22.1	2.520"	64	3.230"	82	5.905"	150
1-1/2"	1.984"	50.4	1.370"	34.8	2.935"	72	3.425"	87	5.905"	150
2"	2.520"	64.0	1.870"	47.5	2.935"	72	3.680"	93.5	5.905"	150
2-1/2"	3.050"	77.5	2.370"	60.2	2.940"	76	3.880"	98.5	5.905"	150
3"	3.616"	91.9	2.870"	72.9	2.950"	76	4.015"	102	5.905"	150
4"	4.670"	118.3	3.830"	97.4	4.050"	104	4.700"	119.5	5.905"	150

Soporte Hexagonal c/a Goma
Tipo 304



TAMAÑO NOMINAL	inche	D mm	inche	A mm	inche	B mm
1"	1.000"	25.40	3.750"	95.25	3.000"	76.20
1-1/2"	1.500"	38.10	3.750"	95.25	3.000"	76.20
2"	2.000"	50.80	4.312"	109.52	3.562"	90.47
2-1/2"	2.500"	63.50	4.875"	123.83	4.187"	106.35
3"	3.000"	76.20	5.500"	139.70	4.750"	120.65
4"	4.000"	101.60	6.546"	166.27	5.796"	147.22

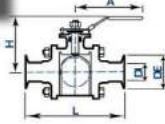
Referencia: ASME DPC 2005, Tabla D1-2 Higiene Unions



Válvula Mariposa Soldable
Tipo 304 / 316L

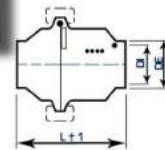
TAMAÑO NOMINAL	inche	DE mm	DI mm	L mm	H mm	A mm				
1"	1.000"	25.4	0.980"	22.1	1.570"	40	3.230"	82	5.905"	150
1-1/2"	1.500"	38.1	1.370"	34.8	1.970"	50	3.425"	87	5.905"	150
2"	2.000"	50.8	1.870"	47.5	1.970"	50	3.680"	93.5	5.905"	150
2-1/2"	2.500"	63.5	2.370"	60.2	1.970"	50	3.680"	93.5	5.905"	150
3"	3.000"	76.2	2.870"	72.9	1.970"	50	4.015"	102	5.905"	150
4"	4.000"	101.3	3.830"	97.4	2.020"	64	4.700"	119.5	5.905"	150

Válvula Bola CLAMP Tipo 304 / 316L



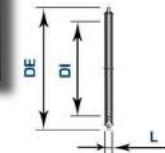
CLAVE	TAMAÑO NOMINAL	DE	DI	L	H	A
		inche	mm	inche	mm	inche
DMI VBLMP 5	1/2"	1.000"	25.4	0.370"	9.40	3.480"
DMI VBLMP 7	3/4"	1.000"	25.4	0.620"	15.75	4.045"
DMI VBLMP 10	1"	1.984"	50.4	0.870"	22.10	4.535"
DMI VBLMP 15	1-1/2"	1.984"	50.4	1.370"	34.80	5.508"
DMI VBLMP 20	2"	2.520"	63.9	1.870"	47.50	6.225"
DMI VBLMP 25	2-1/2"	3.050"	77.5	2.370"	60.20	7.800"
DMI VBLMP 30	3"	3.580"	90.9	2.870"	72.90	8.956"
DMI VBLMP 40	4"	4.680"	118.9	3.834"	97.38	9.527"

Válvula Check Tipo 304 / 316L



CLAVE	TAMAÑO NOMINAL	DE	DI	L
		inche	mm	inche
DMI VCHW 10	1"	1.000"	25.40	0.870"
DMI VCHW 15	1-1/2"	1.500"	38.10	1.370"
DMI VCHW 20	2"	2.000"	50.80	1.870"
DMI VCHW 25	2-1/2"	2.500"	63.50	2.370"
DMI VCHW 30	3"	3.000"	76.20	2.870"
DMI VCHW 40	4"	4.000"	101.60	3.835"

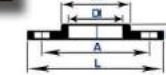
Empaque para Unión CLAMP Tipo 304 / 316L



CLAVE	TAMAÑO NOMINAL	DE	DI	L
		inche	mm	inche
DMI 40MP 5	1/2"	1.000"	25.4	0.177"
DMI 40MP 7	3/4"	1.000"	25.4	0.177"
DMI 40MP 10	1"	1.984"	50.4	0.217"
DMI 40MP 15	1-1/2"	1.984"	50.4	0.217"
DMI 40MP 20	2"	2.516"	63.9	0.217"
DMI 40MP 25	2-1/2"	3.050"	77.5	0.217"
DMI 40MP 30	3"	3.579"	90.9	0.217"
DMI 40MP 40	4"	4.680"	118.9	0.217"
DMI 40MP 60	6"	6.571"	166.9	0.217"

SILICÓN: Temperatura de servicio desde -50°C a +230°C, excelente resistencia a la intemperie, al vapor y aceites vegetales.
TEFLÓN (PTFE): Temperatura de servicio desde -40°C a +230°C, excelente resistencia a la corrosión, al vapor, aceites vegetales, ácidos, petroquímicos, ozono, y la abrasión, aprobado por FDA y USDA.
BUNA: Temperatura de servicio desde -40°C a +100°C, excelente resistencia a petroquímicos y aceites vegetales, buena resistencia a los ácidos y bases.

Brida Sanitaria Slip-On Tipo 304



CLAVE	TAMAÑO NOMINAL	DE	DI	L	A	D	E
		inche	mm	inche	mm	inche	mm
DMI BRIDASANO 10	1"	1.887"	48.2	1.015"	25.7	4.250"	107.9
DMI BRIDASANO 15	1-1/4"	2.312"	58.7	1.260"	32.1	4.625"	117.4
DMI BRIDASANO 20	2"	2.902"	73.7	1.510"	38.4	5.000"	127
DMI BRIDASANO 25	2-1/2"	3.502"	89.4	1.760"	44.6	5.375"	137.1
DMI BRIDASANO 30	3"	4.250"	107.9	2.010"	50.8	5.750"	146.05
DMI BRIDASANO 40	4"	5.312"	134.9	2.260"	57.6	6.125"	156.1
DMI BRIDASANO 60	6"	7.750"	196.8	2.760"	70.1	6.875"	174.6
DMI BRIDASANO 80	8"	9.887"	250.6	3.260"	83.3	7.625"	194.1
DMI BRIDASANO 100	10"	12.000"	304.8	3.760"	95.7	8.375"	212.7
DMI BRIDASANO 150	15"	15.000"	381.0	4.760"	120.7	9.375"	239.1

Mirilla CLAMP Tipo 304 / 316L



CLAVE	TAMAÑO NOMINAL	DE	DI	A	B	C
		inche	mm	inche	mm	inche
DMI 54SMP 10	1"	1.000"	25.40	0.870"	22.10	5.750"
DMI 54SMP 15	1-1/2"	1.500"	38.10	1.370"	34.80	6.000"
DMI 54SMP 20	2"	2.000"	50.80	1.870"	47.50	6.000"
DMI 54SMP 25	2-1/2"	2.500"	63.50	2.370"	60.20	7.000"
DMI 54SMP 30	3"	3.000"	76.20	2.870"	72.90	7.940"
DMI 54SMP 40	4"	4.000"	101.60	3.834"	97.38	8.000"

Tubería Sanitaria ASTM A270
Tipo 304 / 316L

Estándares de fabricación:
ASTM A269, ASTM A270, 3-A en los tipos 304 y 316L.



DIMENSIONES Y PESO NORMA A270

TAMAÑO NOMINAL	DE		DI		Cal	E		PESO kg
	inche	mm	inche	mm		inche	mm	
1/2"	0.500"	12.70	0.370"	9.40	16	0.065"	1.65	3
3/4"	0.750"	19.05	0.620"	15.75	16	0.065"	1.65	4.5
1"	1.000"	25.40	0.870"	22.10	16	0.065"	1.65	6
1-1/2"	1.500"	38.10	1.370"	34.80	16	0.065"	1.65	9
2"	2.000"	50.80	1.870"	47.50	16	0.065"	1.65	12
2-1/2"	2.500"	63.50	2.370"	60.20	16	0.065"	1.65	15
3"	3.000"	76.20	2.870"	72.90	16	0.065"	1.65	18
4"	4.000"	101.60	3.834"	93.78	14	0.083"	2.11	30
6"	6.000"	152.40	5.782"	146.86	12	0.109"	2.77	60
8"	8.000"	203.20	7.782"	197.66	12	0.109"	2.77	110



TIPOS DE TUBERÍA SANITARIA

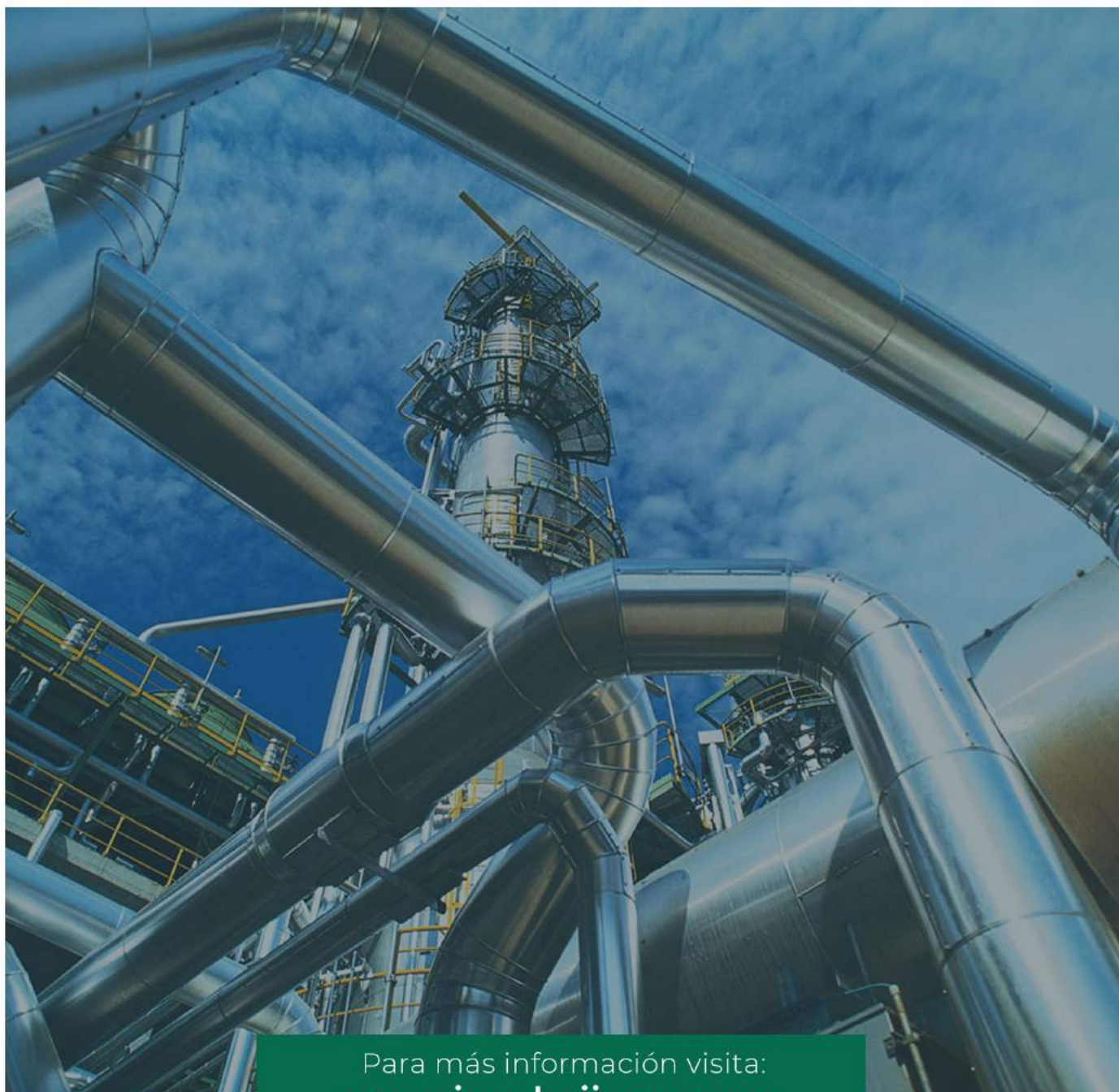
Designación de Tubería	Especificación	Acabado Interior	Acabado Exterior	Descripción
Farmacéutico	ASTM A270 TP316L S2 ASME BPE 3-A	Pulido mecánico SF1 20 μpulg máx. Ra. y Electropulido SF4 15 μpulg máx. Ra.	32 μpulg máx. Ra.	Tubing OD con costura, con calidad farmacéutica ASME-BPE, cumple también con 3-A. En 1/2" y 3/4", se ofrece tubería sin costura ASTM A213.
Dual 316L	ASTM A270 TP316L 3-A	32 μpulg máx. Ra.	32 μpulg máx. Ra.	Tubing OD con costura, con aprobación 3-A, pulida interior y exteriormente, para líneas de procesos de la industria alimentaria con requisitos de mayor resistencia a la corrosión.
Dual 304L	ASTM A270 TP304/304L 3-A	32 μpulg máx. Ra.	32 μpulg máx. Ra.	Tubing OD con costura, pulido interior y exterior, para líneas de proceso no críticas.

TUBERÍA SANITARIA ASTM A270

CLAVE	TAMAÑO NOMINAL	Calibre		DE		DI		L		Peso Kg
		inche	mm	inche	mm	inche	mm	inche	mm	
DMI 3A TUBOSAN 5	1/2"	0.065"	1.65	0.500"	12.7	0.370"	9.4	240.16"	6100	3
DMI 3A TUBOSAN 7	3/4"	0.065"	1.65	0.750"	19.1	0.620"	15.75	240.16"	6100	4.5
DMI 3A TUBOSAN 10	1"	0.065"	1.65	1.000"	25.4	0.870"	22.1	240.16"	6100	6
DMI 3A TUBOSAN 15	1-1/2"	0.065"	1.65	1.500"	38.1	1.370"	34.8	240.16"	6100	9
DMI 3A TUBOSAN 20	2"	0.065"	1.65	2.000"	50.8	1.870"	47.5	240.16"	6100	12
DMI 3A TUBOSAN 25	2-1/2"	0.065"	1.65	2.500"	63.5	2.370"	60.2	240.16"	6100	15
DMI 3A TUBOSAN 30	3"	0.065"	1.65	3.000"	76.2	2.870"	72.9	240.16"	6100	18
DMI 3A TUBOSAN 40	4"	0.083"	2.11	4.000"	101.6	3.834"	97.38	240.16"	6100	30
DMI 3A TUBOSAN 60	6"	0.109"	2.77	6.000"	152.4	5.782"	146.86	240.16"	6100	60

Inoxidables del Bajío

Soluciones para Crecer



Para más información visita:
www.inoxbajio.com.mx



Teléfonos:

01 (462) 62 511 38
01 (462) 62 517 51



Whatsapp:

(462) 254 77 09
(462) 595 59 68

Si tienes alguna duda o necesitas otro tipo de información,
ponte en contacto con nosotros.
inoxbajio1@prodigy.net.mx