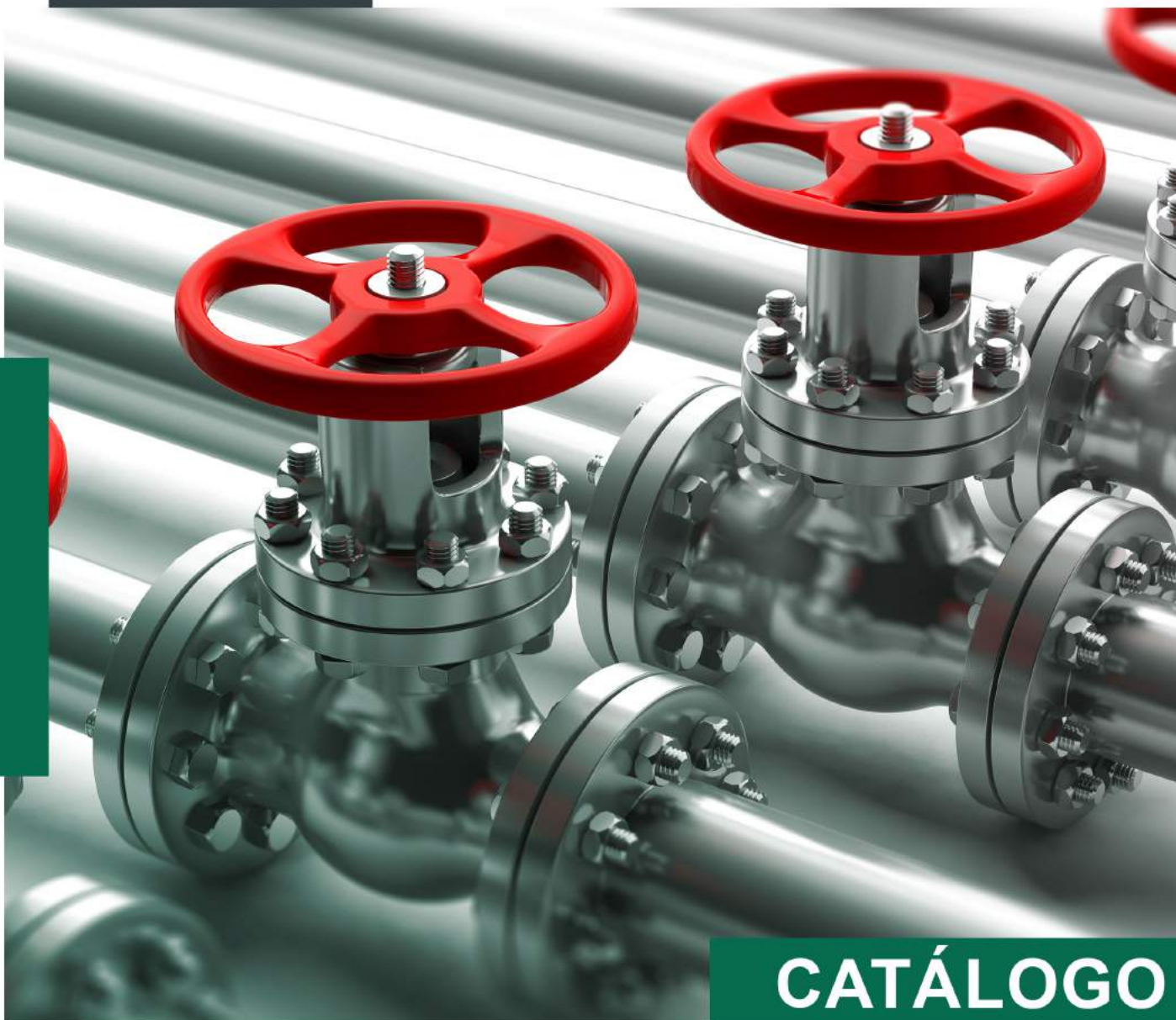


www.inoxbajio.com.mx

 **Inoxidables del Bajío**
Soluciones para Crecer



Especialistas en el Suministro de Tubería, Válvulas y Conexiones de Acero Inoxidable y al Carbón para la industria.

Teléfonos:

01 (462) 62 511 38
01 (462) 62 517 51

Whatsapp:

(462) 254 77 09
(462) 595 59 68

**CATÁLOGO
INDUSTRIAL**





Índice

	Pág.
Introducción	1
Industrial	2
Codo 90° Soldable	4
Codo 90° Roscado	4
Codo 45° Soldable	5
Codo 45° Roscado	5
Tee Recta Soldable	6
Tee Recta Rosca	6
Tapón Macho Roscado	7
Tapón Capa Soldable	7
Tapón Capa Roscado	8
Tuerca Unión Roscada	8
Cople Roscado	9
Medio Cople Roscado	9
Reducción Bushing	10
Reducción Camapana	11
Reducción Concéntrica y Excéntrica	12
Brida Welding-Neck	14
Brida Slip-On	14
Brida Lap Joint	15
Brida Socket Welding	15
Brida Ciega	16
Niple	16
Válvula Mariposa Tipo Wafer	18
Válvula Bola Roscada Paso Cpmpleto	18
Válvula Bola Roscada [3 pzs]	18
Válvula Check Roscada	19
Válvula Bola Roscado AC	19
Abrazadera Tipo U	19
Tubería Pipe Con Costura	20
Tubería Pipe Sin Costura	22
Tubing	23

ESTAMOS UBICADOS ESTRATÉGICAMENTE EN EL CORAZÓN DEL BAJÍO

Con la finalidad de brindar el mejor al servicio a nuestros clientes hemos desarrollado procesos de abastecimiento que nos permiten entregarte los productos que necesites en el menor tiempo del mercado.

Inoxidables del Bajío

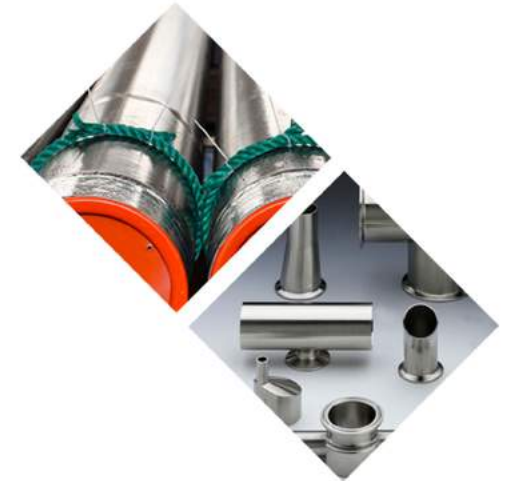
Soluciones para Crecer

SOMOS ESPECIALISTAS

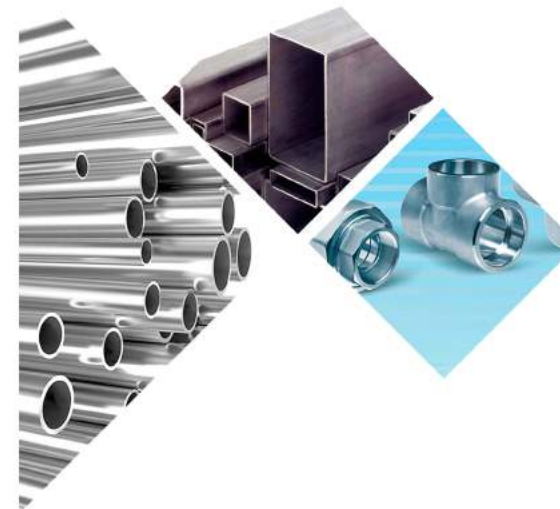
En el suministro de tubería, válvulas y conexiones de acero al carbón e inoxidable para la industria.

ESTAMOS UBICADOS ESTRATÉGICAMENTE EN EL CORAZÓN DEL BAJÍO.

Con la finalidad de brindar el mejor al servicio a nuestros clientes hemos desarrollado procesos de abastecimiento que nos permiten entregarte los productos que necesites en el menor tiempo del mercado.



De igual forma aprovechamos el expertise de nuestros ingenieros para seleccionar las mejores soluciones para tus necesidades, eligiendo entre los mejores productos para asegurar el cumplimiento de las especificaciones más estrictas.



Catálogo Inoxbajo Industrial



ASTM INTERNATIONAL

PRODUCTO INDUSTRIAL



INDUSTRIAL

Descripción:

Las conexiones y tubería industriales son usadas principalmente en líneas de proceso químicos, petroquímicos, alimenticio e industria en general.

Existen distintos tipos de conexiones y tubería industrial, las más conocidas son las conexiones roscables (NPT) y soldables a tope (en Ced. 40 y 80). Estas pueden ser en Acero Inoxidable 304, 304L y 316, 316L.

- Conexiones Roscadas (National Pipe Thread): Permite que la tubería y las conexiones se "suelden" fuertemente cuando se juntan, creando una unión muy resistente mecánicamente y a pruebas de fugas.

- Soldables: Son soldables a tope y son usadas para líneas de proceso permanentes que no serán desmontadas.



En la tubería Pipe o tubería de cedula la más utilizada es bajo la norma A312, la cual puede ser en cedulas 10, 40 y 80. En México las más utilizadas son en acero inoxidable 304, 304L y 316/316L.

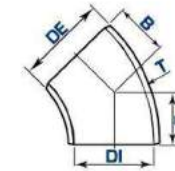
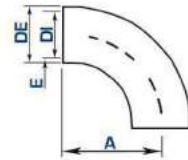
ELEMENTO	REQUERIMIENTOS MÁXIMOS EN %			
	AI 304	AI 304L	AI 316	AI 316L
CABONO (C)	0.08	0.035	0.08	0.035
MANGANESO (Mn)	2.0	2.0	2.0	2.0
FÓSFORO (P)	0.045	0.045	0.045	0.045
AZUFRE (S)	0.030	0.030	0.030	0.030
SILICIO (Si)	1.0	1.0	1.0	1.0
NIQUEL (Ni)	8.0 - 11.0	8.0 - 12.0	10.0 - 14.0	10.0 - 14.0
CROMO (Cr)	18.0 - 20.0	18.0 - 20.0	16.0 - 18.0	16.0 - 18.0
MOLIBDENO (Mo)	N/A	N/A	2.0 - 3.0	2.0 - 3.0
FIERRO (Fe) Y OTRO	% Restante	% Restante	% Restante	% Restante

Codo de 90° Extremos Soldables
Tipo 304 / 316L

Codo de 45° Extremos Soldables
Tipo 304 / 316L

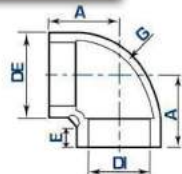
TAMAÑO NOMINAL	DE	Cedula 10				Cedula 40				B		
		in	mm	in	mm	in	mm	in	mm			
1/2"	0.840"	21.33	0.674"	17.12	0.083"	2.11	0.622"	15.79	0.109"	2.77	0.625"	15.87
3/4"	1.050"	26.67	0.884"	22.45	0.083"	2.11	0.824"	20.93	0.113"	2.87	0.437"	11.09
1"	1.315"	33.40	1.097"	27.86	0.109"	2.77	1.049"	26.64	0.133"	3.37	0.875"	22.22
1-1/4"	1.660"	42.16	1.442"	36.62	0.109"	2.77	1.380"	35.05	0.140"	3.55	1.000"	25.40
1-1/2"	1.900"	48.26	1.682"	42.72	0.109"	2.77	1.610"	40.89	0.145"	3.68	1.125"	28.57
2"	2.375"	60.32	2.157"	54.78	0.109"	2.77	2.067"	52.50	0.154"	3.91	1.375"	34.92
2-1/2"	2.875"	73.02	2.635"	66.93	0.120"	3.04	2.469"	62.71	0.203"	5.15	1.750"	44.45
3"	3.500"	88.90	3.260"	82.80	0.120"	3.04	3.068"	77.92	0.216"	5.48	2.000"	50.80
3-1/2"	4.000"	101.6	3.760"	95.50	0.120"	3.04	3.548"	90.11	0.226"	5.74	2.250"	57.15
4"	4.500"	114.3	4.260"	108.20	0.120"	3.04	4.026"	102.26	0.237"	6.01	2.500"	63.50
5"	5.563"	141.30	5.295"	134.49	0.134"	3.40	5.047"	128.19	0.258"	6.55	3.125"	79.37
6"	6.625"	168.25	6.357"	161.46	0.134"	3.40	6.065"	154.05	0.280"	7.11	3.750"	95.25
8"	8.625"	219.07	8.329"	211.55	0.148"	3.76	7.981"	202.71	0.322"	8.17	5.000"	127.00
10"	10.750"	273.05	10.420"	264.66	0.165"	4.19	10.020"	254.50	0.365"	9.27	6.250"	158.75
12"	12.750"	323.85	12.390"	314.70	0.180"	4.57	12.000"	304.8	0.375"	9.52	7.500"	190.50
14"	14.000"	356.60	13.624"	346.05	0.188"	4.77	13.250"	336.55	0.375"	9.52	8.750"	222.25
16"	16.000"	406.40	15.624"	396.85	0.188"	4.77	15.250"	387.35	0.375"	9.52	10.000"	254.00
18"	18.000"	457.20	17.624"	447.65	0.188"	4.77	17.250"	438.15	0.375"	9.52	11.250"	289.75
20"	20.000"	508.00	19.564"	496.92	0.218"	5.54	19.250"	488.95	0.375"	9.52	12.500"	317.50
24"	24.000"	609.60	23.500"	596.90	0.250"	6.35	23.250"	590.55	0.375"	9.52	15.000"	381.00

TAMAÑO NOMINAL	DE	Cedula 10				Cedula 40				B		
		in	mm	in	mm	in	mm	in	mm			
1/2"	0.840"	21.33	0.674"	17.12	0.083"	2.11	0.622"	15.79	0.109"	2.77	0.625"	15.87
3/4"	1.050"	26.67	0.884"	22.45	0.083"	2.11	0.824"	20.93	0.113"	2.87	0.437"	11.09
1"	1.315"	33.40	1.097"	27.86	0.109"	2.77	1.049"	26.64	0.133"	3.37	0.875"	22.22
1-1/4"	1.660"	42.16	1.442"	36.62	0.109"	2.77	1.380"	35.05	0.140"	3.55	1.000"	25.40
1-1/2"	1.900"	48.26	1.682"	42.72	0.109"	2.77	1.610"	40.89	0.145"	3.68	1.125"	28.57
2"	2.375"	60.32	2.157"	54.78	0.109"	2.77	2.067"	52.50	0.154"	3.91	1.375"	34.92
2-1/2"	2.875"	73.02	2.635"	66.93	0.120"	3.04	2.469"	62.71	0.203"	5.15	1.750"	44.45
3"	3.500"	88.90	3.260"	82.80	0.120"	3.04	3.068"	77.92	0.216"	5.48	2.000"	50.80
3-1/2"	4.000"	101.6	3.760"	95.50	0.120"	3.04	3.548"	90.11	0.226"	5.74	2.250"	57.15
4"	4.500"	114.3	4.260"	108.20	0.120"	3.04	4.026"	102.26	0.237"	6.01	2.500"	63.50
5"	5.563"	141.30	5.295"	134.49	0.134"	3.40	5.047"	128.19	0.258"	6.55	3.125"	79.37
6"	6.625"	168.25	6.357"	161.46	0.134"	3.40	6.065"	154.05	0.280"	7.11	3.750"	95.25
8"	8.625"	219.07	8.329"	211.55	0.148"	3.76	7.981"	202.71	0.322"	8.17	5.000"	127.00
10"	10.750"	273.05	10.420"	264.66	0.165"	4.19	10.020"	254.50	0.365"	9.27	6.250"	158.75
12"	12.750"	323.85	12.390"	314.70	0.180"	4.57	12.000"	304.8	0.375"	9.52	7.500"	190.50
14"	14.000"	356.60	13.624"	346.05	0.188"	4.77	13.250"	336.55	0.375"	9.52	8.750"	222.25
16"	16.000"	406.40	15.624"	396.85	0.188"	4.77	15.250"	387.35	0.375"	9.52	10.000"	254.00
18"	18.000"	457.20	17.624"	447.65	0.188"	4.77	17.250"	438.15	0.375"	9.52	11.250"	289.75
20"	20.000"	508.00	19.564"	496.92	0.218"	5.54	19.250"	488.95	0.375"	9.52	12.500"	317.50
24"	24.000"	609.60	23.500"	596.90	0.250"	6.35	23.250"	590.55	0.375"	9.52	15.000"	381.00

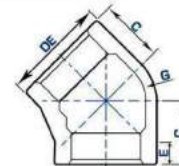


Codo de 90° Roscado
Tipo 304 / 316L

Codo 45° Roscado
Tipo 304 / 316L



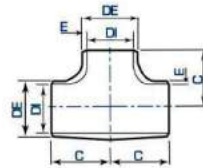
TAMAÑO NOMINAL	DE	DI	A	E	G					
in	mm	in	mm	in	mm					
1/8"	0.750"	19.05	0.125"	3.17	0.810"	20.57	0.200"	5.08	0.090"	2.28
1/4"	0.840"	21.33	0.250"	6.35	0.810"	20.57	0.200"	5.08	0.090"	2.28
3/8"	1.010"	25.65	0.375"	9.52	0.930"	23.62	0.210"	5.33	0.100"	2.54
1/2"	1.200"	30.48	0.500"	12.70	1.120"	28.44	0.250"	6.35	0.100"	2.54
3/4"	1.480"	37.69	0.750"	19.05	1.310"	33.27	0.270"	6.85	0.120"	3.04
1"	1.770"	44.96	1.000"	25.40	1.500"	38.10	0.300"	7.62	0.130"	3.30
1-1/4"	2.150"	54.61	1.250"	31.75	1.750"	44.45	0.340"	8.63	0.140"	3.55
1-1/2"	2.430"	61.72	1.500"	38.10	1.930"	49.02	0.370"	9.39	0.150"	3.81
2"	2.960"	75.18	2.000"	50.80	2.250"	57.15	0.420"	10.66	0.170"	4.31
2-1/2"	3.310"	84.07	2.500"	63.50	2.680"	68.07	0.480"	12.19	0.210"	5.33
3"	4.000"	101.60	3.000"	76.20	3.060"	77.72	0.550"	13.97	0.230"	5.84
4"	5.060"	128.52	4.000"	101.60	3.810"	96.77	0.660"	16.76	0.260"	6.60



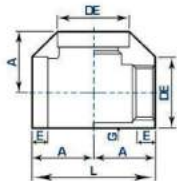
TAMAÑO NOMINAL	DE	DI	C	E	G					
in	mm	in	mm	in	mm					
1/8"	0.750"	19.05	0.125"	3.17	0.690"	17.52	0.200"	5.08	0.090"	2.28
1/4"	0.840"	21.33	0.250"	6.35	0.690"	17.52	0.200"	5.08	0.090"	2.28
3/8"	1.020"	25.90	0.375"	9.52	0.810"	20.57	0.210"	5.33	0.100"	2.54
1/2"	1.210"	30.73	0.500"	12.70	0.810"	20.57	0.210"	5.33	0.100"	2.54
3/4"	1.460"	37.05	0.750"	19.05	1.000"	25.40	0.270"	6.85	0.120"	3.04
1"	1.770"	44.96	1.000"	25.40	1.120"	28.44	0.300"	7.62	0.130"	3.30
1-1/4"	2.150"	54.61	1.250"	31.75	1.310"	33.27	0.340"	8.63	0.140"	3.55
1-1/2"	2.430"	61.72	1.500"	38.10	1.430"	36.32	0.370"	9.39	0.150"	3.81
2"	2.960"	75.18	2.000"	50.80	1.680"	42.67	0.420"	10.66	0.170"	4.31
2-1/2"	3.310"	84.07	2.500"	63.50	1.930"	49.02	0.480"	12.19	0.210"	5.33
3"	4.000"	101.60	3.000"	76.20	2.180"	55.37	0.550"	13.97	0.230"	5.84
4"	5.060"	128.52	4.000"	101.60	2.620"	66.54	0.660"	16.76	0.260"	6.60

Te Recta Soldable
Tipo 304 / 316L

TAMAÑO NOMINAL	DE		Cedilla 10				Cedilla 40				C	
	inche	mm	inche	DI	inche	E	inche	DI	inche	E		mm
1/2"	0.840"	21.33	0.674"	17.12	0.083"	2.11	0.622"	15.79	0.109"	2.77	1.000"	25.40
3/4"	1.050"	26.67	0.884"	22.45	0.083"	2.11	0.824"	20.93	0.113"	2.87	1.125"	28.57
1"	1.315"	33.40	1.097"	27.86	0.109"	2.77	1.049"	26.64	0.133"	3.37	1.500"	38.10
1-1/4"	1.660"	42.16	1.442"	36.62	0.109"	2.77	1.380"	35.05	0.140"	3.55	1.875"	47.62
1-1/2"	1.900"	48.25	1.662"	42.72	0.109"	2.77	1.610"	40.89	0.145"	3.68	2.250"	57.15
2"	2.375"	60.32	2.157"	54.78	0.109"	2.77	2.067"	52.50	0.154"	3.91	2.500"	63.50
2-1/2"	2.875"	73.02	2.635"	66.93	0.120"	3.04	2.469"	62.71	0.200"	5.15	3.000"	76.20
3"	3.500"	88.90	3.260"	82.80	0.120"	3.04	3.068"	77.92	0.216"	5.48	3.375"	85.72
3-1/2"	4.000"	101.6	3.760"	95.50	0.120"	3.04	3.548"	90.11	0.226"	5.74	3.750"	95.25
4"	4.500"	114.3	4.260"	108.20	0.120"	3.04	4.026"	102.26	0.237"	6.01	4.125"	104.77
5"	5.563"	141.30	5.295"	134.49	0.134"	3.40	5.047"	128.19	0.258"	6.55	4.875"	123.82
6"	6.625"	168.75	6.357"	161.46	0.134"	3.40	6.065"	154.05	0.280"	7.11	5.625"	142.87
8"	8.625"	219.07	8.329"	211.55	0.148"	3.76	7.981"	202.71	0.322"	8.17	7.000"	177.80
10"	10.750"	273.05	10.420"	264.66	0.165"	4.19	10.020"	254.50	0.365"	9.27	8.500"	215.90
12"	12.750"	323.85	12.390"	314.70	0.180"	4.57	12.000"	304.8	0.375"	9.52	10.000"	254.00
14"	14.000"	356.60	13.624"	346.05	0.188"	4.77	13.250"	336.55	0.375"	9.52	11.000"	279.40
16"	16.000"	406.40	15.624"	396.85	0.188"	4.77	15.250"	387.35	0.375"	9.52	12.000"	304.80
18"	18.000"	457.20	17.624"	447.65	0.188"	4.77	17.250"	438.15	0.375"	9.52	13.500"	342.90
20"	20.000"	508.00	19.564"	496.92	0.218"	5.54	19.250"	488.95	0.375"	9.52	15.000"	381.00
24"	24.000"	609.60	23.500"	596.90	0.250"	6.35	23.250"	590.55	0.375"	9.52	17.000"	431.80



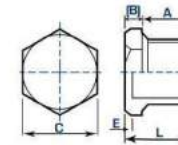
Tee Roscado
Tipo 304 / 316L



TAMAÑO NOMINAL	DE		DI		A		E		G	
	inche	mm	inche	mm	inche	mm	inche	mm	inche	mm
1/8"	0.750"	19.05	0.125"	3.17	0.810"	20.57	0.200"	5.08	0.090"	2.28
1/4"	0.840"	21.33	0.250"	6.35	0.810"	20.57	0.200"	5.08	0.090"	2.28
3/8"	1.010"	25.65	0.375"	9.52	0.930"	23.62	0.210"	5.33	0.100"	2.54
1/2"	1.200"	30.48	0.500"	12.70	1.120"	28.44	0.250"	6.35	0.100"	2.54
3/4"	1.460"	37.08	0.750"	19.05	1.310"	33.27	0.270"	6.85	0.120"	3.04
1"	1.770"	44.95	1.000"	25.40	1.500"	38.10	0.300"	7.62	0.130"	3.30
1-1/4"	2.150"	54.61	1.250"	31.75	1.750"	44.45	0.340"	8.63	0.140"	3.55
1-1/2"	2.430"	61.72	1.500"	38.10	1.930"	49.02	0.370"	9.39	0.150"	3.81
2"	2.960"	75.18	2.000"	50.80	2.250"	57.15	0.420"	10.66	0.170"	4.31
2-1/2"	3.310"	84.07	2.500"	63.50	2.690"	68.07	0.480"	12.19	0.210"	5.33
3"	4.000"	101.60	3.000"	76.20	3.090"	77.72	0.550"	13.97	0.230"	5.84
4"	5.060"	128.52	4.000"	101.60	3.810"	96.77	0.660"	16.76	0.260"	6.60

Tapón Macho Roscado
Tipo 304 / 316L

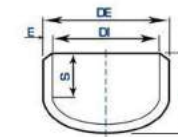
TAMAÑO NOMINAL	A		B		C		E		L	
	inche	mm	inche	mm	inche	mm	inche	mm	inche	mm
1/8"	0.370"	9.39	0.140"	3.55	0.550"	13.97	---	---	0.510"	12.95
1/4"	0.440"	11.17	0.140"	3.55	0.670"	17.01	---	---	0.580"	14.73
3/8"	0.480"	12.19	0.160"	4.06	0.830"	21.08	---	---	0.640"	16.25
1/2"	0.560"	14.22	0.190"	4.82	1.020"	25.90	0.160"	4.06	0.760"	19.30
3/4"	0.630"	16.00	0.220"	5.58	1.200"	30.48	0.180"	4.57	0.850"	21.59
1"	0.750"	19.05	0.250"	6.35	1.430"	36.32	0.200"	5.08	1.000"	25.40
1-1/4"	0.800"	20.32	0.280"	7.11	1.760"	44.70	0.220"	5.58	1.090"	27.68
1-1/2"	0.830"	21.08	0.310"	7.87	2.000"	50.80	0.240"	6.09	1.140"	28.95
2"	0.880"	22.35	0.310"	7.87	2.000"	50.80	0.240"	6.09	1.140"	28.95
2-1/2"	1.070"	27.17	0.370"	9.39	2.980"	75.69	0.290"	7.36	1.440"	36.57
3"	1.130"	28.70	0.400"	10.16	3.860"	98.04	0.310"	7.87	1.530"	38.86
4"	1.220"	30.98	0.500"	12.70	4.630"	117.60	0.380"	9.65	1.720"	43.68



- * Cabeza:
- Hexagonal
 - Cuadrada

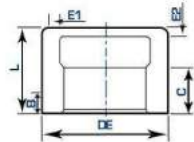
Tapón Capa Soldable
Tipo 304 / 316L

TAMAÑO NOMINAL	DE		Cedilla 10				Cedilla 40				L	S		
	inche	mm	inche	DI	inche	E	inche	DI	inche	E			mm	
1/2"	0.840"	21.33	0.674"	17.12	0.083"	2.11	0.622"	15.79	0.109"	2.77	1.000"	25.40	0.740"	18.79
3/4"	1.050"	26.67	0.884"	22.45	0.083"	2.11	0.824"	20.93	0.113"	2.87	1.000"	25.40	0.680"	17.27
1"	1.315"	33.40	1.097"	27.86	0.109"	2.77	1.049"	26.64	0.133"	3.37	1.500"	38.10	1.100"	27.94
1-1/4"	1.660"	42.16	1.442"	36.62	0.109"	2.77	1.380"	35.05	0.140"	3.55	1.500"	38.10	1.020"	25.90
1-1/2"	1.900"	48.25	1.662"	42.72	0.109"	2.77	1.610"	40.89	0.145"	3.68	1.500"	38.10	0.950"	24.13
2"	2.375"	60.32	2.157"	54.78	0.109"	2.77	2.067"	52.50	0.154"	3.91	1.500"	38.10	0.830"	21.08
2-1/2"	2.875"	73.02	2.635"	66.93	0.120"	3.04	2.469"	62.71	0.203"	5.15	1.500"	38.10	0.680"	17.27
3"	3.500"	88.90	3.260"	82.80	0.120"	3.04	3.068"	77.92	0.216"	5.48	2.000"	50.80	1.000"	25.40
3-1/2"	4.000"	101.6	3.760"	95.50	0.120"	3.04	3.548"	90.11	0.226"	5.74	2.500"	63.50	1.400"	35.56
4"	4.500"	114.3	4.260"	108.20	0.120"	3.04	4.026"	102.26	0.237"	6.01	2.500"	63.50	1.260"	32.00
5"	5.563"	141.30	5.295"	134.49	0.134"	3.40	5.047"	128.19	0.258"	6.55	3.000"	76.20	1.480"	37.59
6"	6.625"	168.75	6.357"	161.46	0.134"	3.40	6.065"	154.05	0.280"	7.11	3.500"	88.90	1.700"	43.18
8"	8.625"	219.07	8.329"	211.55	0.148"	3.76	7.981"	202.71	0.322"	8.17	4.000"	101.60	1.680"	42.67
10"	10.750"	273.05	10.420"	264.66	0.165"	4.19	10.020"	254.50	0.365"	9.27	5.000"	127.00	2.130"	54.10
12"	12.750"	323.85	12.390"	314.70	0.180"	4.57	12.000"	304.8	0.375"	9.52	6.000"	152.40	2.630"	66.80
14"	14.000"	356.60	13.624"	346.05	0.188"	4.77	13.250"	336.55	0.375"	9.52	6.500"	165.10	2.810"	71.37
16"	16.000"	406.40	15.624"	396.85	0.188"	4.77	15.250"	387.35	0.375"	9.52	7.000"	177.80	2.810"	71.37
18"	18.000"	457.20	17.624"	447.65	0.188"	4.77	17.250"	438.15	0.375"	9.52	8.000"	203.20	3.810"	96.77
20"	20.000"	508.00	19.564"	496.92	0.218"	5.54	19.250"	488.95	0.375"	9.52	9.000"	228.60	3.810"	96.77
24"	24.000"	609.60	23.500"	596.90	0.250"	6.35	23.250"	590.55	0.375"	9.52	10.500"	266.70	4.310"	109.47



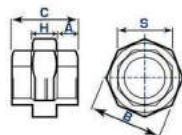
Tapón Capa Roscado Tipo 304 / 316L

TAMAÑO NOMINAL	DE		E1		E2		L		C		B	
	inche	mm	inche	mm	inche	mm	inche	mm	inche	mm	mm	
1/8"	0.750"	19.05	0.090"	2.28	0.090"	2.28	0.680"	17.27	0.250"	6.35	0.200"	5.08
1/4"	0.840"	21.33	0.090"	2.28	0.090"	2.28	0.680"	17.27	0.320"	8.12	0.200"	5.08
3/8"	1.010"	25.65	0.100"	2.54	0.100"	2.54	0.810"	20.57	0.360"	9.14	0.210"	5.33
1/2"	1.200"	30.48	0.100"	2.54	0.120"	3.04	0.930"	23.62	0.430"	10.92	0.250"	6.35
3/4"	1.460"	37.08	0.120"	3.04	0.130"	3.30	1.060"	26.92	0.500"	12.70	0.270"	6.85
1"	1.770"	44.95	0.130"	3.30	0.150"	3.81	1.310"	33.27	0.580"	14.73	0.300"	7.62
1-1/4"	2.150"	54.61	0.140"	3.55	0.170"	4.31	1.620"	41.14	0.670"	17.01	0.340"	8.63
1-1/2"	2.430"	61.72	0.150"	3.81	0.190"	4.82	1.620"	41.14	0.700"	17.78	0.370"	9.39
2"	2.960"	75.18	0.170"	4.31	0.220"	5.58	1.750"	44.45	0.750"	19.05	0.420"	10.66
2-1/2"	3.310"	84.07	0.210"	5.33	0.250"	6.35	2.000"	50.80	0.920"	23.36	0.480"	12.19
3"	4.000"	101.60	0.230"	5.84	0.290"	7.36	2.250"	57.15	0.980"	24.89	0.550"	13.97
4"	5.060"	128.52	0.260"	6.60	0.360"	9.14	2.500"	63.50	1.080"	27.43	0.660"	16.76



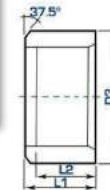
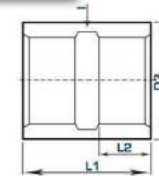
Tuerca Unión Roscada Tipo 304 / 316L

TAMAÑO NOMINAL	A	B	C	H	S	
	inche	mm	inche	mm	inche	mm
1/8"	0.340"	8.63	1.140"	28.95	1.260"	32.00
1/4"	0.430"	10.92	1.140"	28.95	1.440"	36.57
3/8"	0.520"	13.20	1.420"	36.06	1.610"	40.89
1/2"	0.570"	14.47	1.610"	40.89	1.720"	43.68
3/4"	0.670"	17.01	1.930"	49.02	1.940"	49.27
1"	0.680"	17.27	2.280"	57.91	2.060"	52.32
1-1/4"	0.720"	18.28	2.670"	67.81	2.260"	57.40
1-1/2"	0.780"	19.81	3.020"	76.70	2.410"	61.21
2"	0.890"	22.60	3.600"	91.44	2.750"	69.85
2-1/2"	1.110"	28.19	4.290"	108.96	3.220"	81.78
3"	1.180"	29.97	4.920"	124.96	3.500"	88.90
4"	1.260"	32.00	6.140"	155.95	3.850"	97.79



Cople Roscado Tipo 304 / 316L

TAMAÑO NOMINAL	D3	I	L1	L2
	inche	mm	inche	mm
1/8"	0.750"	19.05	0.090"	2.28
1/4"	0.840"	21.33	0.090"	2.28
3/8"	1.010"	25.65	0.100"	2.54
1/2"	1.200"	30.48	0.100"	2.54
3/4"	1.460"	37.08	0.120"	3.04
1"	1.770"	44.95	0.130"	3.30
1-1/4"	2.150"	54.61	0.140"	3.55
1-1/2"	2.430"	61.72	0.150"	3.81
2"	2.960"	75.18	0.170"	4.31
2-1/2"	3.310"	84.07	0.210"	5.33
3"	4.000"	101.60	0.230"	5.84
4"	5.060"	128.52	0.260"	6.60

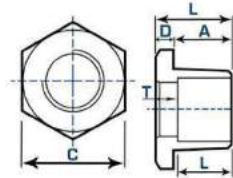


Medio Cople Roscado Tipo 304 / 316L

TAMAÑO NOMINAL	D3	L1	L2	
	inche	mm	inche	mm
1/8"	0.750"	19.05	0.500"	12.70
1/4"	0.840"	21.33	0.500"	12.70
3/8"	1.010"	25.65	0.560"	14.22
1/2"	1.200"	30.48	0.690"	17.52
3/4"	1.460"	37.08	0.750"	19.05
1"	1.770"	44.95	0.810"	20.57
1-1/4"	2.150"	54.61	1.000"	25.40
1-1/2"	2.430"	61.72	1.060"	26.92
2"	2.960"	75.18	1.250"	31.75
2-1/2"	3.310"	84.07	1.440"	36.57
3"	4.000"	101.60	1.590"	40.38
4"	5.060"	128.52	1.840"	46.73

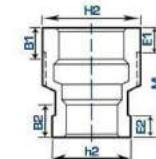
Reducción Bushing
Tipo 304 / 316L

TAMAÑO NOMINAL	A	C	D	L	T	
	in	mm	in	mm	mm	
1/4"x1/8"	0.440	11.17	0.630	16.00	0.120	3.04
3/8"x1/8"	0.500	12.70	0.870	22.09	0.160	4.06
3/8"x1/4"	0.500	12.70	0.870	22.09	0.160	4.06
1/2"x1/8"	0.560	14.22	1.000	25.40	0.190	4.82
1/2"x1/4"	0.560	14.22	1.000	25.40	0.190	4.82
1/2"x3/8"	0.560	14.22	1.000	25.40	0.190	4.82
3/4"x1/8"	0.620	15.74	1.240	31.49	0.220	5.58
3/4"x1/4"	0.620	15.74	1.240	31.49	0.220	5.58
3/4"x3/8"	0.620	15.74	1.240	31.49	0.220	5.58
1"x1/8"	0.750	19.05	1.370	34.79	0.250	6.35
1"x1/4"	0.750	19.05	1.370	34.79	0.250	6.35
1"x3/8"	0.750	19.05	1.370	34.79	0.250	6.35
1"x1/2"	0.750	19.05	1.370	34.79	0.250	6.35
1"x3/4"	0.750	19.05	1.370	34.79	0.250	6.35
1-1/4"x1/4"	0.810	20.57	1.750	44.45	0.280	7.11
1-1/4"x3/8"	0.810	20.57	1.750	44.45	0.280	7.11
1-1/4"x1/2"	0.810	20.57	1.750	44.45	0.280	7.11
1-1/4"x3/4"	0.810	20.57	1.750	44.45	0.280	7.11
1-1/4"x1"	0.810	20.57	1.750	44.45	0.280	7.11
1-1/2"x1/2"	0.810	20.57	2.000	50.80	0.310	7.87
1-1/2"x3/4"	0.810	20.57	2.000	50.80	0.310	7.87
1-1/2"x1"	0.810	20.57	2.000	50.80	0.310	7.87
1-1/2"x1-1/4"	0.810	20.57	2.000	50.80	0.310	7.87
1-1/2"x1-1/2"	0.810	20.57	2.000	50.80	0.310	7.87
1-1/2"x2"	0.810	20.57	2.000	50.80	0.310	7.87
1-1/2"x2-1/4"	0.810	20.57	2.000	50.80	0.310	7.87
2"x1/4"	0.880	22.37	2.500	63.50	0.340	8.63
2"x3/8"	0.880	22.37	2.500	63.50	0.340	8.63
2"x1/2"	0.880	22.37	2.500	63.50	0.340	8.63
2"x3/4"	0.880	22.37	2.500	63.50	0.340	8.63
2"x1"	0.880	22.37	2.500	63.50	0.340	8.63
2"x1-1/4"	0.880	22.37	2.500	63.50	0.340	8.63
2"x1-1/2"	0.880	22.37	2.500	63.50	0.340	8.63
2-1/2"x1/2"	1.060	26.92	3.000	76.20	0.380	9.65
2-1/2"x3/4"	1.060	26.92	3.000	76.20	0.380	9.65
2-1/2"x1"	1.060	26.92	3.000	76.20	0.380	9.65
2-1/2"x1-1/4"	1.060	26.92	3.000	76.20	0.380	9.65
2-1/2"x1-1/2"	1.060	26.92	3.000	76.20	0.380	9.65
2-1/2"x2"	1.060	26.92	3.000	76.20	0.380	9.65
2-1/2"x2-1/4"	1.060	26.92	3.000	76.20	0.380	9.65
3"x1/4"	1.120	28.44	3.750	95.25	0.410	10.41
3"x3/8"	1.120	28.44	3.750	95.25	0.410	10.41
3"x1/2"	1.120	28.44	3.750	95.25	0.410	10.41
3"x3/4"	1.120	28.44	3.750	95.25	0.410	10.41
3"x1"	1.120	28.44	3.750	95.25	0.410	10.41
3"x1-1/4"	1.120	28.44	3.750	95.25	0.410	10.41
3"x1-1/2"	1.120	28.44	3.750	95.25	0.410	10.41
3"x2"	1.120	28.44	3.750	95.25	0.410	10.41
3"x2-1/2"	1.120	28.44	3.750	95.25	0.410	10.41
4"x1"	1.250	31.75	4.630	117.60	0.600	15.24
4"x1-1/4"	1.250	31.75	4.630	117.60	0.600	15.24
4"x1-1/2"	1.250	31.75	4.630	117.60	0.600	15.24
4"x2"	1.250	31.75	4.630	117.60	0.600	15.24
4"x2-1/2"	1.250	31.75	4.630	117.60	0.600	15.24
4"x3"	1.250	31.75	4.630	117.60	0.600	15.24



Reducción Campana
Tipo 304 / 316L

TAMAÑO NOMINAL	h2	H2	B1	B2	E1	E2	M	
	in	mm	in	mm	in	mm	mm	
1/4"x1/8"	0.750	19.05	0.840	21.33	0.320	8.12	0.250	6.35
3/8"x1/8"	0.750	19.05	1.010	25.65	0.360	9.14	0.250	6.35
3/8"x1/4"	0.840	21.33	1.010	25.65	0.360	9.14	0.320	8.12
1/2"x1/8"	0.750	19.05	1.200	30.48	0.430	10.92	0.250	6.35
1/2"x1/4"	0.840	21.33	1.200	30.48	0.430	10.92	0.320	8.12
1/2"x3/8"	1.010	25.65	1.200	30.48	0.430	10.92	0.360	9.14
3/4"x1/8"	0.750	19.05	1.460	37.08	0.500	12.70	0.250	6.35
3/4"x1/4"	0.840	21.33	1.460	37.08	0.500	12.70	0.320	8.12
3/4"x3/8"	1.010	25.65	1.460	37.08	0.500	12.70	0.360	9.14
1"x1/8"	0.750	19.05	1.770	44.95	0.580	14.73	0.250	6.35
1"x1/4"	0.840	21.33	1.770	44.95	0.580	14.73	0.320	8.12
1"x3/8"	1.010	25.65	1.770	44.95	0.580	14.73	0.360	9.14
1"x1/2"	1.200	30.48	1.770	44.95	0.580	14.73	0.430	10.92
1"x3/4"	1.460	37.08	1.770	44.95	0.580	14.73	0.500	12.70
1-1/4"x1/4"	1.170	44.95	2.960	75.18	0.750	19.05	0.580	14.73
1-1/4"x3/8"	2.150	54.61	2.960	75.18	0.750	19.05	0.670	17.01
1-1/4"x1/2"	2.430	61.72	2.960	75.18	0.750	19.05	0.700	17.78
1-1/4"x3/4"	1.460	37.08	3.310	84.07	0.920	23.36	0.500	12.70
1-1/4"x1"	1.770	44.95	3.310	84.07	0.920	23.36	0.580	14.73
1-1/2"x1/4"	2.150	54.61	3.310	84.07	0.920	23.36	0.670	17.01
1-1/2"x3/8"	2.430	61.72	3.310	84.07	0.920	23.36	0.700	17.78
1-1/2"x1/2"	2.960	75.18	3.310	84.07	0.920	23.36	0.750	19.05
1-1/2"x3/4"	1.460	37.08	4.000	101.60	0.980	24.89	0.500	12.70
1-1/2"x1"	2.150	54.61	4.000	101.60	0.980	24.89	0.580	14.73
2"x1/4"	0.840	21.33	2.960	75.18	0.750	19.05	0.320	8.12
2"x3/8"	1.010	25.65	2.960	75.18	0.750	19.05	0.360	9.14
2"x1/2"	1.200	30.48	2.960	75.18	0.750	19.05	0.430	10.92
2"x3/4"	1.460	37.08	2.960	75.18	0.750	19.05	0.500	12.70
2"x1"	1.770	44.95	2.960	75.18	0.750	19.05	0.580	14.73
2"x1-1/4"	2.150	54.61	2.960	75.18	0.750	19.05	0.670	17.01
2"x1-1/2"	2.430	61.72	2.960	75.18	0.750	19.05	0.700	17.78
2-1/2"x3/4"	1.460	37.08	3.310	84.07	0.920	23.36	0.500	12.70
2-1/2"x1"	1.770	44.95	3.310	84.07	0.920	23.36	0.580	14.73
2-1/2"x1-1/4"	2.150	54.61	3.310	84.07	0.920	23.36	0.670	17.01
2-1/2"x1-1/2"	2.430	61.72	3.310	84.07	0.920	23.36	0.700	17.78
2-1/2"x2"	2.960	75.18	3.310	84.07	0.920	23.36	0.750	19.05
3"x3/4"	1.460	37.08	4.000	101.60	0.980	24.89	0.500	12.70
3"x1"	1.770	44.95	4.000	101.60	0.980	24.89	0.580	14.73
3"x1-1/4"	2.150	54.61	4.000	101.60	0.980	24.89	0.670	17.01
3"x1-1/2"	2.430	61.72	4.000	101.60	0.980	24.89	0.700	17.78
3"x2"	2.960	75.18	4.000	101.60	0.980	24.89	0.750	19.05
3"x2-1/2"	3.310	84.07	4.000	101.60	0.980	24.89	0.820	20.81
4"x1"	1.770	44.95	5.060	128.52	1.080	27.43	0.580	14.73
4"x1-1/4"	2.150	54.61	5.060	128.52	1.080	27.43	0.670	17.01
4"x1-1/2"	2.430	61.72	5.060	128.52	1.080	27.43	0.700	17.78
4"x2"	2.960	75.18	5.060	128.52	1.080	27.43	0.750	19.05
4"x2-1/2"	3.310	84.07	5.060	128.52	1.080	27.43	0.820	20.81
4"x3"	4.000	101.60	5.060	128.52	1.080	27.43	0.980	24.89

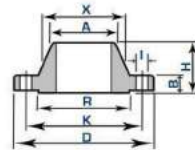


Reducción Concéntrica y Excéntrica
Tipo 304 / 316L

TAMANO NOMINAL	Cuello 10											
	DE1		DE2		DH1		DH2		E1		E2	
3/4"x3/8"	1.050	26.67	0.675	17.14	0.884	22.45	0.545	13.84	0.083	2.10	0.085	1.65
3/4"x1/2"	1.050	26.67	0.840	21.33	0.884	22.45	0.674	17.11	0.083	2.10	0.083	2.10
1"x3/8"	1.315	33.40	0.675	17.14	1.097	27.86	0.545	13.84	0.109	2.76	0.065	1.65
1"x1/2"	1.315	33.40	0.840	21.33	1.097	27.86	0.674	17.11	0.109	2.76	0.083	2.10
1"x3/4"	1.315	33.40	1.050	26.67	1.097	27.86	0.884	22.45	0.109	2.76	0.083	2.10
1-1/4"x1/2"	1.660	42.16	0.840	21.33	1.442	36.62	0.674	17.11	0.109	2.76	0.083	2.10
1-1/4"x3/4"	1.660	42.16	1.050	26.67	1.442	36.62	0.884	22.45	0.109	2.76	0.083	2.10
1-1/4"x1"	1.660	42.16	1.315	33.40	1.442	36.62	1.097	27.86	0.109	2.76	0.109	2.76
1-1/2"x1/2"	1.900	48.26	0.840	21.33	1.682	42.72	0.674	17.11	0.109	2.76	0.083	2.10
1-1/2"x3/4"	1.900	48.26	1.050	26.67	1.682	42.72	0.884	22.45	0.109	2.76	0.083	2.10
1-1/2"x1"	1.900	48.26	1.315	33.40	1.682	42.72	1.097	27.86	0.109	2.76	0.109	2.76
1-1/2"x1-1/4"	1.900	48.26	1.660	42.16	1.682	42.72	1.442	36.62	0.109	2.76	0.109	2.76
2"x3/4"	2.375	60.32	1.050	26.67	2.157	54.78	0.884	22.45	0.109	2.76	0.083	2.10
2"x1"	2.375	60.32	1.315	33.40	2.157	54.78	1.097	27.86	0.109	2.76	0.109	2.76
2"x1-1/4"	2.375	60.32	1.660	42.16	2.157	54.78	1.442	36.62	0.109	2.76	0.109	2.76
2-1/4"x1/2"	2.875	73.02	1.315	33.40	2.635	66.92	1.097	27.86	0.120	3.04	0.109	2.76
2-1/4"x1"	2.875	73.02	1.660	42.16	2.635	66.92	1.442	36.62	0.120	3.04	0.109	2.76
2-1/2"x1-1/4"	2.875	73.02	1.900	48.26	2.635	66.92	1.682	42.72	0.120	3.04	0.109	2.76
2-1/2"x2"	2.875	73.02	2.375	60.32	2.635	66.92	2.157	54.78	0.120	3.04	0.109	2.76
3"x1"	3.500	88.90	1.315	33.40	3.260	82.80	1.097	27.86	0.120	3.04	0.109	2.76
3"x1-1/4"	3.500	88.90	1.660	42.16	3.260	82.80	1.442	36.62	0.120	3.04	0.109	2.76
3"x1-1/2"	3.500	88.90	1.900	48.26	3.260	82.80	1.682	42.72	0.120	3.04	0.109	2.76
3"x2"	3.500	88.90	2.375	60.32	3.260	82.80	2.157	54.78	0.120	3.04	0.109	2.76
3"x2-1/2"	3.500	88.90	2.875	73.02	3.260	82.80	2.635	66.92	0.120	3.04	0.109	2.76
3-1/2"x1-1/4"	4.000	101.60	1.660	42.16	3.760	95.50	1.442	36.62	0.120	3.04	0.109	2.76
3-1/2"x1-1/2"	4.000	101.60	1.900	48.26	3.760	95.50	1.682	42.72	0.120	3.04	0.109	2.76
3-1/2"x2"	4.000	101.60	2.375	60.32	3.760	95.50	2.157	54.78	0.120	3.04	0.109	2.76
3-1/2"x2-1/2"	4.000	101.60	2.875	73.02	3.760	95.50	2.635	66.92	0.120	3.04	0.109	2.76
4"x1-1/2"	4.500	114.30	1.900	48.26	4.260	108.20	1.682	42.72	0.120	3.04	0.109	2.76
4"x2"	4.500	114.30	2.375	60.32	4.260	108.20	2.157	54.78	0.120	3.04	0.109	2.76
4"x2-1/2"	4.500	114.30	2.875	73.02	4.260	108.20	2.635	66.92	0.120	3.04	0.109	2.76
4"x3"	4.500	114.30	3.350	85.41	4.260	108.20	3.260	82.80	0.120	3.04	0.109	2.76
4"x3-1/2"	4.500	114.30	3.850	97.78	4.260	108.20	3.760	95.50	0.120	3.04	0.109	2.76
5"x2"	5.563	141.30	2.375	60.32	5.295	134.49	2.157	54.78	0.134	3.40	0.109	2.76
5"x2-1/2"	5.563	141.30	2.875	73.02	5.295	134.49	2.635	66.92	0.134	3.40	0.109	2.76
5"x3"	5.563	141.30	3.350	85.41	5.295	134.49	3.260	82.80	0.134	3.40	0.109	2.76
5"x3-1/2"	5.563	141.30	3.850	97.78	5.295	134.49	3.760	95.50	0.134	3.40	0.109	2.76
6"x4"	6.625	168.27	3.500	88.90	6.357	161.46	3.260	82.80	0.134	3.40	0.109	2.76
6"x4-1/2"	6.625	168.27	4.000	101.60	6.357	161.46	3.760	95.50	0.134	3.40	0.109	2.76
6"x5"	6.625	168.27	4.500	114.30	6.357	161.46	4.260	108.20	0.134	3.40	0.109	2.76
6"x5-1/2"	6.625	168.27	5.000	127.00	6.357	161.46	4.760	118.58	0.134	3.40	0.109	2.76
6"x6"	6.625	168.27	5.563	141.30	6.357	161.46	5.295	134.49	0.134	3.40	0.109	2.76
6"x6-1/2"	6.625	168.27	6.063	153.65	6.357	161.46	5.795	146.81	0.134	3.40	0.109	2.76
7"x4"	8.625	219.07	4.000	101.60	8.359	211.55	3.760	95.50	0.165	4.19	0.165	4.19
7"x4-1/2"	8.625	219.07	4.500	114.30	8.359	211.55	4.260	108.20	0.165	4.19	0.165	4.19
7"x5"	8.625	219.07	5.000	127.00	8.359	211.55	4.760	118.58	0.165	4.19	0.165	4.19
7"x5-1/2"	8.625	219.07	5.563	141.30	8.359	211.55	5.295	134.49	0.165	4.19	0.165	4.19
7"x6"	8.625	219.07	6.063	153.65	8.359	211.55	5.795	146.81	0.165	4.19	0.165	4.19
7"x6-1/2"	8.625	219.07	6.625	168.27	8.359	211.55	6.357	161.46	0.165	4.19	0.165	4.19
8"x4"	10.750	273.05	4.500	114.30	10.000	254.50	4.260	108.20	0.165	4.19	0.165	4.19
8"x4-1/2"	10.750	273.05	5.000	127.00	10.000	254.50	4.760	118.58	0.165	4.19	0.165	4.19
8"x5"	10.750	273.05	5.563	141.30	10.000	254.50	5.295	134.49	0.165	4.19	0.165	4.19
8"x5-1/2"	10.750	273.05	6.063	153.65	10.000	254.50	5.795	146.81	0.165	4.19	0.165	4.19
8"x6"	10.750	273.05	6.625	168.27	10.000	254.50	6.357	161.46	0.165	4.19	0.165	4.19
8"x6-1/2"	10.750	273.05	7.188	182.55	10.000	254.50	6.857	173.87	0.165	4.19	0.165	4.19
9"x4"	12.750	323.85	5.000	127.00	12.000	304.80	4.760	118.58	0.187	4.57	0.187	4.57
9"x4-1/2"	12.750	323.85	5.563	141.30	12.000	304.80	5.295	134.49	0.187	4.57	0.187	4.57
9"x5"	12.750	323.85	6.063	153.65	12.000	304.80	5.795	146.81	0.187	4.57	0.187	4.57
9"x5-1/2"	12.750	323.85	6.625	168.27	12.000	304.80	6.357	161.46	0.187	4.57	0.187	4.57
9"x6"	12.750	323.85	7.188	182.55	12.000	304.80	6.857	173.87	0.187	4.57	0.187	4.57
9"x6-1/2"	12.750	323.85	7.750	197.15	12.000	304.80	7.357	186.28	0.187	4.57	0.187	4.57
10"x4"	14.000	356.60	5.563	141.30	13.250	336.55	5.295	134.49	0.187	4.57	0.187	4.57
10"x4-1/2"	14.000	356.60	6.063	153.65	13.250	336.55	5.795	146.81	0.187	4.57	0.187	4.57
10"x5"	14.000	356.60	6.625	168.27	13.250	336.55	6.357	161.46	0.187	4.57	0.187	4.57
10"x5-1/2"	14.000	356.60	7.188	182.55	13.250	336.55	6.857	173.87	0.187	4.57	0.187	4.57
10"x6"	14.000	356.60	7.750	197.15	13.250	336.55	7.357	186.28	0.187	4.57	0.187	4.57
10"x6-1/2"	14.000	356.60	8.313	211.83	13.250	336.55	7.857	198.69	0.187	4.57	0.187	4.57
11"x4"	16.000	406.40	6.063	153.65	15.250	387.35	5.795	146.81	0.210	5.33	0.210	5.33
11"x4-1/2"	16.000	406.40	6.625	168.27	15.250	387.35	6.357	161.46	0.210	5.33	0.210	5.33
11"x5"	16.000	406.40	7.188	182.55	15.250	387.35	6.857	173.87	0.210	5.33	0.210	5.33
11"x5-1/2"	16.000	406.40	7.750	197.15	15.250	387.35	7.357	186.28	0.210	5.33	0.210	5.33
11"x6"	16.000	406.40	8.313	211.83	15.250	387.35	7.857	198.69	0.210	5.33	0.210	5.33
11"x6-1/2"	16.000	406.40	8.875	226.67	15.250	387.35	8.357	211.11	0.210	5.33	0.210	5.33
12"x4"	18.000	457.20	6.625	168.27	17.250	438.15	6.357	161.46	0.210	5.33	0.210	5.33
12"x4-1/2"	18.000	457.20	7.188	182.55	17.250	438.15	6.857	173.87	0.210	5.33	0.210	5.33
12"x5"	18.000	457.20	7.750	197.15	17.250	438.15	7.357	186.28	0.210	5.33	0.210	5.33
12"x5-1/2"	18.000	457.20	8.313	211.83	17.250	438.15	7.857	198.69	0.210	5.33	0.210	5.33
12"x6"	18.000	457.20	8.875	226.67	17.250	438.15	8.357	211.11	0.210	5.33	0.210	5.33
12"x6-1/2"	18.000	457.20	9.438	241.63	17.250	438.15	8.857	223.52	0.210	5.33	0.210	5.33
13"x4"	20.000	508.00	7.188	182.55	19.250	488.95	6.857	173.87	0.250	6.35	0.250	6.35
13"x4-1/2"	20.000	508.00	7.750	197.15	19.250	488.95	7.357	186.28	0.250	6.35	0.250	6.35
13"x5"	20.000	508.00	8.313	211.83	19.250	488.95	7.857	198.69	0.250	6.35	0.250	6.35
13"x5-1/2"	20.000	508.00	8.875	226.67	19.250	488.95	8.357	211.11	0.250	6.35	0.250	6.35
13"x6"	20.000	508.00	9.438	241.63	19.250	488.95	8.857	223.52	0.250	6.35	0.250	6.35
13"x6-1/2"	20.000	508.00	10.000	254.00	19.250	488.95	9.357	235.93	0.250	6.35	0.250	6.35
14"x4"	24.000	609.60	7.750	197.15	23.250	589.85	7.357	186.28	0.250	6.35	0.250	6.35
14"x4-1/2"	24.000	609.60	8.313	211.83	23.250	589.85	7.857	198.69	0.250	6.35	0.250	6.35
14"x5"	24.000	609.60	8.875	226.67	23.250	589.85	8.357	211.11	0.250	6.35	0	

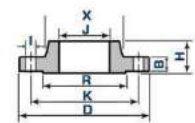
Brida Welding - Neck
Tipo 304 / 316L

TAMANO NOMINAL	D	BRIDA			H	CUELLO			RESALTE	NUMERO	TALADROS			PESO KG				
		in	mm	in		in	mm	in			mm	in	mm		in	mm		
1/2"	3.500	88.9	0.437	11.1	1.874	47.6	0.840	21.34	1.188	30.2	1.374	34.9	4	0.620	15.75	2.374	60.3	0.90
3/4"	3.875	98.4	0.500	12.7	2.062	52.4	1.050	26.67	1.500	38.1	1.888	42.9	4	0.620	15.75	2.748	69.8	0.90
1"	4.250	107.9	0.562	14.3	2.188	55.6	1.314	33.40	1.937	49.2	2.000	50.8	4	0.620	15.75	3.125	79.4	1.40
1-1/4"	4.625	117.5	0.625	15.9	2.248	57.1	1.659	42.16	2.311	58.7	2.500	63.5	4	0.620	15.75	3.500	88.9	1.40
1-1/2"	5.000	127.0	0.688	17.5	2.437	61.9	1.833	46.26	2.522	65.1	2.874	73.0	4	0.620	15.75	3.874	98.4	1.40
2"	6.000	152.4	0.751	19.1	2.500	63.5	2.375	60.33	3.062	77.8	3.625	92.1	4	0.750	19.05	4.748	120.6	2.70
2-1/2"	7.000	177.8	0.874	22.2	2.748	69.8	2.875	73.03	3.562	90.5	4.125	104.8	4	0.750	19.05	5.500	139.7	3.60
3"	7.500	190.5	0.937	23.8	2.748	69.8	3.500	88.90	4.248	107.9	5.000	127.0	4	0.750	19.05	6.000	152.4	3.60
3-1/2"	8.500	215.9	0.937	23.8	2.856	71.4	4.000	101.80	4.811	122.2	5.500	139.7	8	0.750	19.05	7.000	177.8	5.40
4"	9.000	228.6	0.937	23.8	3.000	76.2	4.500	114.30	5.311	134.9	6.188	157.2	8	0.750	19.05	7.500	190.5	6.80
5"	10.000	254.0	0.937	23.8	3.500	88.9	5.562	141.30	6.437	163.5	7.311	185.7	8	0.875	22.35	8.500	215.9	8.60
6"	11.000	279.4	1.000	25.4	3.500	88.9	6.625	168.28	7.562	192.1	8.500	215.9	8	0.875	22.35	9.500	241.3	10.90
8"	13.500	342.9	1.125	28.6	4.000	101.6	8.625	219.08	9.688	246.1	10.625	269.9	8	0.875	22.35	11.748	298.4	17.70
10"	16.000	406.4	1.188	30.2	4.000	101.6	10.750	273.06	12.000	304.8	12.748	323.8	12	1.000	25.40	12.478	361.9	23.80
12"	19.000	482.6	1.251	31.8	4.500	114.3	12.750	323.85	14.374	365.1	15.000	381.0	12	1.000	25.40	17.000	431.8	36.30
14"	21.000	533.4	1.374	34.9	5.000	127.0	14.000	355.90	15.748	400.0	16.248	412.7	12	1.120	28.45	18.748	476.2	50.00
16"	23.500	596.9	1.437	36.5	5.000	127.0	16.000	406.40	18.000	457.2	18.500	469.9	16	1.120	28.45	21.248	539.7	64.00
18"	25.000	635.0	1.562	39.7	5.500	139.7	18.000	457.20	19.874	504.8	21.000	533.4	16	1.250	31.75	22.748	577.8	68.00
20"	27.500	698.5	1.688	42.9	5.770	144.3	20.000	508.00	22.000	558.8	23.000	584.2	20	1.250	31.75	25.000	635.0	81.60
24"	32.000	812.8	1.874	47.6	6.000	152.4	24.000	609.60	26.125	663.6	26.125	662.1	20	1.375	35.05	29.500	749.3	118.00



Brida Slip - On
Tipo 304

TAMANO NOMINAL	D	in	mm	BRIDA			H	CUELLO			RESALTE	NUMERO	TALADROS			PESO KG		
				in	mm	in		in	mm	in			mm	in	mm			
1/2"	3.500	88.9	0.877	22.3	0.437	11.1	0.625	15.9	1.188	30.2	1.374	34.9	4	0.620	15.75	2.374	60.3	0.90
3/4"	3.875	98.4	1.000	27.7	0.500	12.7	0.625	15.9	1.500	38.1	1.888	42.9	4	0.620	15.75	2.748	69.8	0.90
1"	4.250	107.9	1.358	34.5	0.562	14.3	0.688	17.5	1.937	49.2	2.000	50.8	4	0.620	15.75	3.125	79.4	0.90
1-1/4"	4.625	117.5	1.700	43.2	0.625	15.9	0.811	20.6	2.311	58.7	2.500	63.5	4	0.620	15.75	3.500	88.9	1.40
1-1/2"	5.000	127.0	1.948	49.5	0.688	17.5	0.874	22.2	2.522	65.1	2.874	73.0	4	0.620	15.75	3.874	98.4	1.40
2"	6.000	152.4	2.440	62.0	0.751	19.1	1.000	25.4	3.062	77.8	3.625	92.1	4	0.750	19.05	4.748	120.6	2.30
2-1/2"	7.000	177.8	2.940	74.7	0.874	22.2	1.125	28.6	3.562	90.5	4.125	104.8	4	0.750	19.05	5.500	139.7	3.60
3"	7.500	190.5	3.570	90.7	0.937	23.8	1.188	30.2	4.248	107.9	5.000	127.0	4	0.750	19.05	6.000	152.4	3.60
3-1/2"	8.500	215.9	4.070	103.4	0.937	23.8	1.248	31.7	4.811	122.2	5.500	139.7	8	0.750	19.05	7.000	177.8	5.40
4"	9.000	228.6	4.570	116.1	0.937	23.8	1.311	33.3	5.311	134.9	6.188	157.2	8	0.750	19.05	7.500	190.5	6.80
5"	10.000	254.0	5.661	143.8	0.937	23.8	1.437	36.5	6.437	163.5	7.311	185.7	8	0.875	22.35	8.500	215.9	8.60
6"	11.000	279.4	6.720	170.7	1.000	25.4	1.562	39.7	7.562	192.1	8.500	215.9	8	0.875	22.35	9.500	241.3	10.90
8"	13.500	342.9	8.720	221.5	1.125	28.6	1.748	44.4	9.688	246.1	10.625	269.9	8	0.875	22.35	11.748	298.4	17.70
10"	16.000	406.4	10.877	276.3	1.188	30.2	1.837	46.2	12.000	304.8	12.748	323.8	12	1.000	25.40	12.478	361.9	23.80
12"	19.000	482.6	12.877	327.1	1.251	31.8	2.188	55.6	14.374	365.1	15.000	381.0	12	1.000	25.40	17.000	431.8	36.30
14"	21.000	533.4	14.137	359.1	1.374	34.9	2.248	57.1	15.748	400.0	16.248	412.7	12	1.120	28.45	18.748	476.2	50.00
16"	23.500	596.9	16.161	410.5	1.437	36.5	2.500	63.5	18.000	457.2	18.500	469.9	16	1.120	28.45	21.248	539.7	64.00
18"	25.000	635.0	18.181	461.8	1.562	39.7	2.688	68.3	19.874	504.8	21.000	533.4	16	1.250	31.75	22.748	577.8	68.00
20"	27.500	698.5	20.200	513.1	1.688	42.9	2.874	73.0	22.000	558.8	23.000	584.2	20	1.250	31.75	25.000	635.0	81.60
24"	32.000	812.8	25.240	615.95	1.874	47.6	3.248	82.5	26.125	663.6	26.125	662.1	20	1.375	35.05	29.500	749.3	99.80

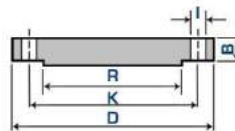


Brida Lap Joint
Tipo 304

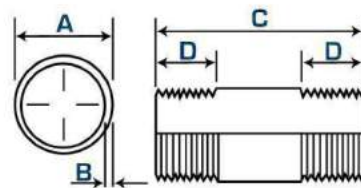
TAMANO NOMINAL	D	in	mm	BRIDA			H	R	X	CUELLO			NUMERO	TALADROS			PESO KG	
				in	mm	in				in	mm	in		mm	in	mm		
1/2"	3.500	88.9	0.901	22.9	0.437	11.1	0.625	15.9	0.125	3.2	1.188	30.2	4	0.620	15.75	2.374	60.3	0.50
3/4"	3.875	98.4	1.110	28.2	0.500	12.7	0.625	15.9	0.125	3.2	1.500	38.1	4	0.620	15.75	2.748	69.8	0.90
1"	4.250	107.9	1.377	35.0	0.562	14.3	0.688	17.5	0.125	3.2	1.937	49.2	4	0.620	15.75	3.125	79.4	0.90
1-1/4"	4.625	117.5	1.700	43.2	0.625	15.9	0.811	20.6	0.188	4.8	2.311	58.7	4	0.620	15.75	3.500	88.9	1.40
1-1/2"	5.000	127.0	1.968	50.0	0.688	17.5	0.874	22.2	0.248	6.3	2.522	65.1	4	0.620	15.75	3.874	98.4	1.40
2"	6.000	152.4	2.460	62.5	0.751	19.1	0.960	24.4	0.311	7.9	3.062	77.8	4	0.750	19.05	4.748	120.6	2.30
2-1/2"	7.000	177.8	2.968	75.4	0.874	22.2	1.125	28.6	0.311	7.9	3.562	90.5	4	0.750	19.05	5.500	139.7	3.20
3"	7.500	190.5	3.598	91.4	0.937	23.8	1.188	30.2	0.374	9.5	4.248	107.9	4	0.750	19.05	6.000	152.4	3.60
3-1/2"	8.500	215.9	4.098	104.1	0.937	23.8	1.248	31.7	0.374	9.5	4.811	122.2	8	0.750	19.05	7.000	177.8	5.00
4"	9.000	228.6	4.598	116.8	0.937	23.8	1.311	33.3	0.437	11.1	5.311	134.9	8	0.750	19.05	7.500	190.5	5.90
5"	10.000	254.0	5.688	144.5	0.937	23.8	1.437	36.5	0.437	11.1	6.437	163.5	8	0.875	22.35	8.500	215.9	6.80
6"	11.000	279.4	6.748	171.4	1.000	25.4	1.562	39.7	0.500	12.7	7.562	192.1	8	0.875	22.35	9.500	241.3	8.60
8"	13.500	342.9	8.748	222.2	1.125	28.6	1.748	44.4	0.500	12.7	9.688	246.1	8	0.875	22.35	11.748	298.4	13.60
10"	16.000	406.4	10.921	277.4	1.188	30.2	1.937	49.2	0.50									

Brida Ciega
Tipo 304

TAMAÑO NOMINAL	BRIDA				RESALTE		NÚMERO	TALADROS			PESO KG	
	inche	D mm	inche	B mm	inche	R mm		inche	I mm	K mm		
1/2"	3.500"	88.9	0.437"	11.1	1.374"	34.9	4	0.620"	15.75	2.374"	60.3	0.50
3/4"	3.875"	98.4	0.500"	12.7	1.688"	42.9	4	0.620"	15.75	2.748"	69.8	0.90
1"	4.250"	107.9	0.562"	14.3	2.000"	50.8	4	0.620"	15.75	3.125"	79.4	0.90
1-1/4"	4.625"	117.5	0.625"	15.9	2.500"	63.5	4	0.620"	15.75	3.500"	88.9	1.40
1-1/2"	5.000"	127.0	0.688"	17.5	2.874"	73.0	4	0.620"	15.75	3.874"	98.4	1.80
2"	6.000"	152.4	0.751"	19.1	3.625"	92.1	4	0.750"	19.05	4.748"	120.6	2.30
2-1/2"	7.000"	177.8	0.874"	22.2	4.125"	104.8	4	0.750"	19.05	5.500"	139.7	3.20
3"	7.500"	190.5	0.937"	23.8	5.000"	127.0	4	0.750"	19.05	6.000"	152.4	4.10
3-1/2"	8.500"	215.9	0.937"	23.8	5.500"	139.7	8	0.750"	19.05	7.000"	177.8	5.90
4"	9.000"	228.6	0.937"	23.8	6.188"	157.2	8	0.750"	19.05	7.500"	190.5	7.70
5"	10.000"	254.0	0.937"	23.8	7.311"	185.7	8	0.879"	22.35	8.500"	215.9	9.10
6"	11.000"	279.4	1.000"	25.4	8.500"	215.9	8	0.879"	22.35	8.500"	215.9	11.80
8"	13.500"	342.9	1.125"	28.6	10.625"	269.9	8	0.879"	22.35	11.748"	298.4	21.00
10"	16.000"	406.4	1.188"	30.2	12.748"	323.8	12	1.000"	25.40	12.476"	361.9	31.80
12"	19.000"	482.6	1.251"	31.8	15.000"	381.0	12	1.000"	25.40	17.000"	431.8	49.90
14"	21.000"	533.4	1.374"	34.9	16.248"	412.7	12	1.120"	28.45	18.748"	476.2	63.50
16"	23.500"	596.9	1.437"	36.5	18.500"	469.9	16	1.120"	28.45	21.248"	539.7	81.60
18"	25.000"	635.0	1.562"	39.7	21.000"	533.4	16	1.250"	31.75	22.748"	577.8	99.80
20"	27.500"	698.5	1.688"	42.9	23.000"	584.2	20	1.250"	31.75	25.000"	635.0	129.00
24"	32.000"	812.8	1.885"	47.9	26.125"	662.1	20	1.379"	35.05	29.500"	749.3	195.00



NIPL
Tipo 304 / 316L



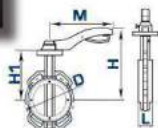
NORMA ANSI B1.20.1 ROSCADO

TAMAÑO NOMINAL	PASO (HILOS POR PULGADA)	No. HILOS (D)			GAGES HILOS
		MIN.	NOM.	MAX.	
1/8"	27	9.6	10.6	11.6	0.100"
1/4"	18	9.7	10.7	11.7	0.120"
3/8"	18	9.8	10.8	11.8	0.130"
1/2"	14	9.9	10.9	11.9	0.150"
3/4"	14	10.1	11.1	12.1	0.150"
1"	11.5	10.3	11.3	12.3	0.180"
1-1/4"	11.5	10.6	11.6	12.6	0.190"
1-1/2"	11.5	10.8	11.8	12.8	0.200"
2"	11.5	11.2	12.2	13.2	0.220"
2-1/2"	8	11.6	12.6	13.6	0.280"
3"	8	12.1	13.1	14.1	0.300"
4"	8	12.9	13.9	14.9	0.340"

NORMA ASTM A53 TUBO CEDULA 40

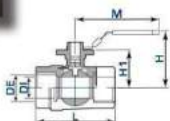
TAMAÑO NOMINAL	inche A		inche C40		inche C80	
	mm	mm	mm	mm	mm	mm
1/8"	0.410"	10.4	0.070"	1.77	0.100"	2.54
1/4"	0.540"	13.7	0.090"	2.28	0.120"	3.04
3/8"	0.680"	17.2	0.090"	2.28	0.130"	3.30
1/2"	0.840"	21.3	0.110"	2.79	0.150"	3.81
3/4"	1.050"	26.6	0.110"	2.79	0.150"	3.81
1"	1.320"	33.5	0.130"	3.30	0.180"	4.57
1-1/4"	1.660"	42.1	0.140"	3.55	0.190"	4.82
1-1/2"	1.900"	48.2	0.150"	3.81	0.200"	5.08
2"	2.380"	60.4	0.150"	3.81	0.220"	5.58
2-1/2"	2.880"	73.1	0.200"	5.08	0.280"	7.11
3"	3.500"	88.9	0.220"	5.58	0.300"	7.62
4"	4.500"	114.3	0.240"	6.09	0.340"	8.63

Válvula Mariposa Tipo Wafer Tipo 304



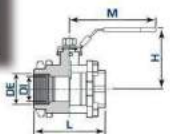
TAMAÑO NOMINAL	DN	L	H	H1	PN10	DN10	ANSI150	M
2"	50	43	225.5	140.5	125	125	120.6	215
2-1/2"	65	46	238	153	145	145	139.7	215
3"	80	46	242.5	157.5	160	160	152.4	215
4"	100	52	261	176	180	180	190.5	215
5"	125	56	276	191	210	210	215.9	215
6"	150	56	287.5	202.5	240	240	241.3	215
8"	200	60	338.5	243.5	295	295	296.4	355
10"	250	68	368	273	360	355	361.9	355
12"	300	78	406	311	400	410	431.8	355

Válvula Bola Roscada Paso Completo Tipo 304 / 316L



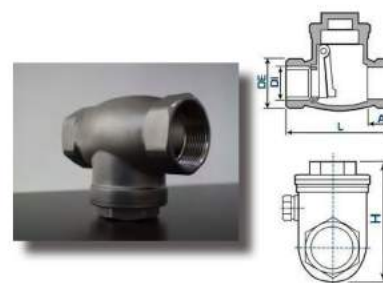
TAMAÑO NOMINAL	DN	L	H	H1	M
1/4"	11.6	50	51.5	36.5	91
3/8"	12.5	50	51.5	36.5	91
1/2"	15	58	53	37.8	100
3/4"	20	65	58	42.5	113
1"	25	80	60	45	113
1-1/4"	32	92	66.5	51.5	143
1-1/2"	38	105	74.5	59.5	143
2"	50	125	83.5	68.5	165

Válvula Bola Roscada (3 Pzs) Tipo 304 / 316L



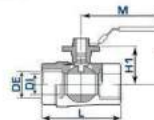
TAMAÑO NOMINAL	DN	L	H	M
1/4"	11.6	61	49	103
3/8"	12.5	61	49	103
1/2"	15	63	57	108
3/4"	20	72	62	108
1"	25	82.5	72	129
1-1/4"	32	97.5	78	129
1-1/2"	38	108.5	91	160
2"	50	124	102	160
2-1/2"	65	162	122	230
3"	76	175	132	230
4"	100	216	177	335

Válvula Check Roscada Tipo 304 / 316L



TAMAÑO NOMINAL	DE	DI	L	H	A
1/2"	1.06"	0.850"	21.7	2.600"	66.0
3/4"	1.36"	1.070"	27.1	3.190"	81.0
1"	1.56"	1.330"	33.8	3.580"	91.0
1-1/4"	1.93"	1.680"	42.6	4.190"	106.5
1-1/2"	2.20"	1.920"	48.7	4.760"	121.0
2"	2.68"	2.410"	61.1	5.590"	142.0
2-1/2"	3.46"	3.210"	73.8	6.250"	159.0
3"	4.13"	3.540"	88.8	7.480"	190.0

Válvula Bola Roscada AC Tipo 304



TAMAÑO NOMINAL	DN	L	H	M
1/2"	15	63	57	108
3/4"	20	72	62	108
1"	25	82.5	72	129
1-1/4"	32	97.5	78	129
1-1/2"	38	108.5	91	160
2"	50	124	102	160

Abrazadera Tipo "U" Tipo 304

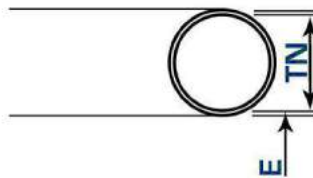


TAMAÑO NOMINAL	Tamaño Nominal	DV	
1/2"	1/4"	0.250"	6.35
3/4"	1/4"	0.250"	6.35
1"	1/4"	0.250"	6.35
1-1/4"	1/4"	0.250"	6.35
1-1/2"	1/4"	0.250"	6.35
2"	1/4"	0.250"	6.35
2-1/2"	5/16"	0.312"	7.92
3"	5/16"	0.312"	7.92
3-1/2"	5/16"	0.312"	7.92
4"	5/16"	0.312"	7.92
5"	5/16"	0.312"	7.92
6"	5/16"	0.312"	7.92
8"	3/8"	0.375"	9.52
10"	3/8"	0.375"	9.52
12"	3/8"	0.375"	9.52

Tubería Pipe Con Costura
Tipo 304 / 316L

TAMAÑO NOMINAL	DE		C	ESPESOR DE PARED		PESO APROX.		PRESIÓN INTERIOR		PRESIÓN DE RUTURA		PRESIÓN EXTERIOR		PRESIÓN APLASTAMIENTO	
	inche	mm		inche	mm	Lb/pie	kg/m	(PSI)	kg/cm ²	(PSI)	kg/cm ²	(PSI)	kg/cm ²	(PSI)	kg/cm ²
1/8"	0.405"	10.29	10	0.049	1.24	0.190	0.283	3550	250	18670	1315	2063	145	8252	580
			40	0.068	1.73	0.250	0.373	5170	365	27200	1915	3195	225	12780	900
			80	0.095	2.41	0.321	0.479	7670	540	43230	3040	5410	381	21640	1524
1/4"	0.540"	13.72	10	0.065	1.65	0.337	0.502	3540	250	19960	1405	2063	145	8252	580
			40	0.088	2.24	0.435	0.648	5000	350	28170	1980	3195	225	12780	900
			80	0.119	3.02	0.547	0.815	7110	500	40070	2820	4096	288	16384	1152
3/8"	0.675"	17.15	10	0.065	1.65	0.433	0.645	2770	195	15630	1100	1453	102	5812	408
			40	0.091	2.31	0.580	0.864	4020	285	22640	1595	2512	177	10048	708
			80	0.126	3.20	0.756	1.126	5830	410	32900	2315	4096	288	16384	1152
1/2"	0.840"	21.34	10	0.083	2.11	0.687	1.023	2860	200	16110	1135	1453	102	5812	408
			40	0.109	2.77	0.871	1.297	3850	270	21730	1530	2063	145	8252	580
			80	0.147	3.73	1.112	1.657	5410	380	30480	2145	3195	225	12780	900
3/4"	1.050"	26.67	10	0.083	2.11	0.877	1.307	2250	160	12670	890	1087	76	4348	304
			40	0.109	2.77	1.121	1.670	3010	210	16990	1195	1453	102	5812	408
			80	0.147	3.73	1.449	2.158	4190	295	23620	1660	2512	177	10048	708
1"	1.315"	33.40	10	0.109	2.77	1.437	2.140	2360	165	13320	935	1189	84	4756	336
			40	0.133	3.38	1.718	2.559	2930	205	16520	1165	1453	102	5812	408
			80	0.179	4.55	2.223	3.311	4070	285	22930	1615	2512	177	10048	708
1-1/4"	1.660"	42.16	10	0.109	2.77	1.848	2.752	1840	130	10400	730	889	63	3556	252
			40	0.140	3.56	2.327	3.486	2410	170	13580	955	1189	84	4756	336
			80	0.191	4.85	3.064	4.564	3370	235	19000	1335	1732	122	6928	488
1-1/2"	1.900"	48.26	10	0.109	2.77	2.134	3.178	1600	115	9020	635	769	54	3076	216
			40	0.145	3.68	2.778	4.138	2160	150	12180	855	1087	76	4348	304
			80	0.200	5.08	3.715	5.533	3060	215	17240	1215	1453	102	5812	408
2"	2.375"	60.33	10	0.109	2.77	2.700	4.022	1270	90	7150	505	533	38	2132	152
			40	0.154	3.91	3.736	5.565	1820	130	10250	720	889	63	3556	252
			80	0.218	5.54	5.140	7.657	2640	185	14870	1045	1309	92	5236	368
2-1/2"	2.875"	73.03	10	0.120	3.05	3.614	5.384	1150	80	6480	455	461	32	1844	128
			40	0.203	5.16	5.931	8.634	1890	140	11230	790	1000	70	4000	280
			10	0.120	3.05	4.434	6.605	940	65	5290	370	345	24	1380	96
3"	3.500"	88.90	40	0.216	5.49	7.755	11.552	1730	120	9740	695	825	58	3300	232
			10	0.120	3.05	5.090	7.582	820	60	4610	325	283	20	1132	80
			40	0.226	5.74	9.319	13.880	1570	110	8880	625	704	50	2816	200

TAMAÑO NOMINAL	DE		C	ESPESOR DE PARED		PESO APROX.		PRESIÓN INTERIOR		PRESIÓN DE RUTURA		PRESIÓN EXTERIOR		PRESIÓN APLASTAMIENTO	
	inche	mm		inche	mm	Lb/pie	kg/m	(PSI)	kg/cm ²	(PSI)	kg/cm ²	(PSI)	kg/cm ²	(PSI)	kg/cm ²
4"	4.500"	114.30	10	0.120	3.05	5.748	8.558	730	50	4090	290	234	16	936	64
			40	0.237	6.02	11.040	16.444	1460	105	8250	580	639	45	3556	252
5"	5.563"	141.30	10	0.134	3.40	7.940	11.627	650	45	3680	260	190	13	760	52
			40	0.258	6.55	14.948	22.295	1280	90	7220	510	539	38	2156	152
6"	6.625"	168.28	10	0.134	3.40	9.494	14.142	550	40	3080	215	141	10	564	40
			40	0.280	7.11	19.407	28.908	1160	80	6560	460	444	31	1776	124
8"	8.625"	219.08	10	0.148	3.76	19.711	29.423	460	30	2610	185	124	9	496	36
			40	0.322	8.18	29.218	43.520	1020	70	5770	405	395	28	1580	112
10"	10.750"	273.05	10	0.165	4.19	19.079	28.418	410	30	2330	165	71	5	284	20
			40	0.365	9.27	47.413	61.686	930	65	5230	370	345	24	1380	96
12"	12.750"	323.85	10	0.180	4.57	24.712	36.808	380	25	2140	150	54	4	216	16
			40	0.375	9.53	50.707	75.528	800	55	4520	320	275	19	1100	76
14"	14.000"	355.60	10	0.188	4.78	28.371	42.260	360	25	2040	145	59	4	236	16
			40	0.375	9.53	52.828	83.157	730	50	4110	290	234	16	936	64
16"	16.000"	406.40	10	0.188	4.78	32.480	48.379	320	25	1780	125	31	2	124	8
			40	0.375	9.53	64.024	95.363	640	45	3560	250	181	13	724	52
18"	18.012"	457.50	10	0.188	4.78	36.812	54.534	280	20	1580	110	22	2	88	8
			40	0.375	9.53	72.267	107.642	560	40	3180	225	146	10	584	40
20"	20.000"	508.00	10	0.218	5.54	47.119	70.185	290	20	1650	115	19	1	76	4
			40	0.375	9.53	80.414	119.777	510	35	2860	200	126	8	504	36
22"	22.000"	558.90	10	0.218	5.54	51.883	77.280	270	20	1500	105	22	2	88	8
			40	0.375	9.53	88.609	131.983	460	30	2590	180	90	6	360	24
24"	24.000"	609.60	10	0.250	6.35	64.877	96.635	280	20	1580	110	25	2	100	8
			40	0.375	9.53	96.804	144.190	420	30	2370	165	73	5	292	20
30"	30.000"	762.00	10	0.312	7.93	101.213	150.757	280	20	1570	110	20	1	80	4
			40	0.375	9.53	121.389	180.810	340	25	1890	135	44	3	176	12



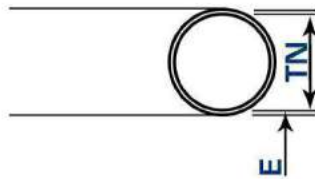
E: Espesor
TN: Tamaño Nominal



Tubería Pipe Sin Costura
Tipo 304 / 316L

Tubing
Tipo 304 / 316L

TAMAÑO NOMINAL	DE		C	ESPESOR DE PARED		PESO APROX.		PRESION INTERIOR		PRESION DE RUTURA		PRESION EXTERIOR		PRESION APLASTAMIENTO	
	inche	mm		inche	mm	Lb./pie	kg/m	(PSI)	kg/cm ²	(PSI)	kg/cm ²	(PSI)	kg/cm ²	(PSI)	kg/cm ²
1/2"	0.840"	21.34	10	0.083	2.11	0.550	0.819	2880	200	16110	1135	1453	102	5812	408
			40	0.109	2.77	0.657	1.023	3850	270	21730	1530	2063	145	8252	580
			80	0.147	3.73	0.871	1.297	5410	380	30480	2145	3195	225	12780	900
3/4"	1.050"	26.67	10	0.083	2.11	0.871	1.307	2250	160	16870	890	1087	76	4348	304
			40	0.109	2.77	1.121	1.670	3010	210	16950	1195	1453	102	5812	408
			80	0.147	3.73	1.449	2.158	4190	295	23820	1660	2512	177	10048	708
1"	1.315"	33.40	10	0.109	2.77	1.437	2.140	2360	165	13320	935	1189	84	4756	336
			40	0.133	3.38	1.718	2.559	2930	205	16520	1165	1453	102	5812	408
			80	0.179	4.55	2.223	3.311	4070	285	22930	1615	2512	177	10048	708
1-1/2"	1.900"	48.26	10	0.109	2.77	2.134	3.178	1600	115	9020	635	769	54	3076	216
			40	0.145	3.68	2.778	4.139	2160	150	12180	855	1087	76	4348	304
			80	0.200	5.08	3.715	5.533	3060	215	17240	1215	1453	102	5812	408
2"	2.375"	60.33	10	0.109	2.77	2.700	4.022	1270	90	7150	505	533	38	2132	152
			40	0.154	3.91	3.736	5.565	1820	130	10250	720	899	63	3556	252
			80	0.218	5.54	5.140	7.857	2640	185	14870	1045	1309	92	5236	368
3"	3.500"	88.90	10	0.120	3.05	4.434	6.605	940	65	5290	370	345	24	1380	96
			40	0.216	5.49	7.755	11.552	1730	120	9740	685	825	58	3300	232
			80	0.300	7.62	10.262	15.274	2277	159	12239	857	1087	76	4348	304
4"	4.400"	114.30	10	0.120	3.05	5.746	8.559	730	50	4090	290	234	16	936	64
			40	0.237	6.02	11.040	16.444	1460	105	8250	580	639	45	3556	252
			80	0.337	8.56	14.998	22.322	1989	139	10693	749	911	64	3644	255
6"	6.625"	168.28	10	0.134	3.40	9.494	14.142	550	40	3080	215	141	10	564	40
			40	0.280	7.11	19.407	28.908	1160	80	6560	460	444	31	1776	124
			80	0.432	10.97	26.593	42.557	1731	121	9308	652	825	58	3300	231
8"	8.625"	219.08	10	0.148	3.76	13.711	20.423	460	30	2610	185	124	9	496	36
			40	0.322	8.18	29.218	43.520	1020	70	5770	405	395	28	1580	112
			80	0.500	12.70	43.428	65.837	1540	108	8277	579	770	54	3080	216

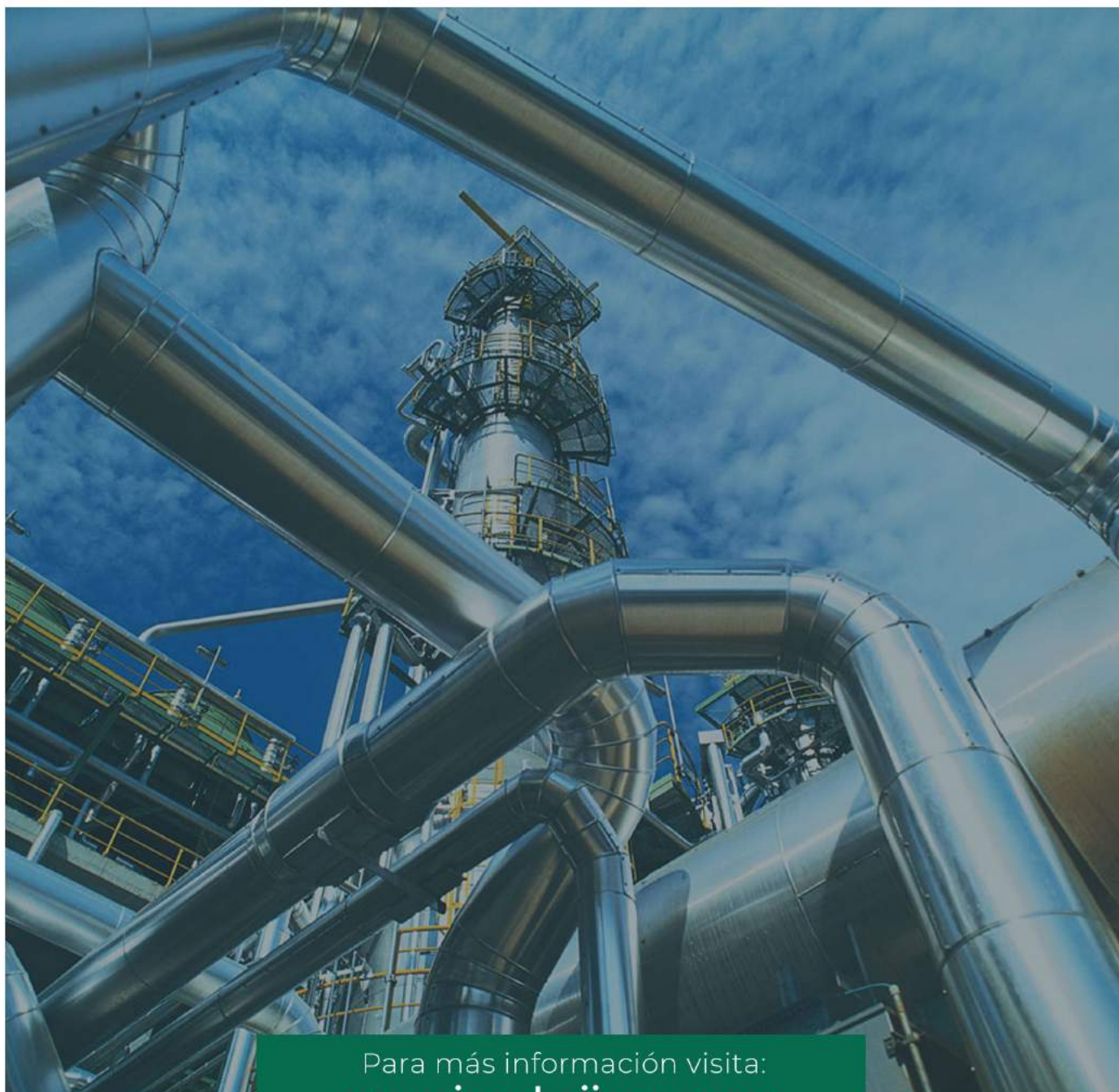


E: Espesor
TN: Tamaño Nominal



TAMAÑO NOMINAL	C	ESPESOR DE PARED		PRESION INTERIOR	PRESION DE RUTURA	PRESION EXTERIOR	PRESION APLASTAMIENTO
		inche	mm				
1/4"	22	0.028	0.71	3270	230	17190	1210
	30	0.035	0.89	4200	295	22100	1555
	22	0.028	0.71	2590	190	13400	950
5/16"	20	0.035	0.89	3280	230	17240	1215
	18	0.049	1.24	4750	335	24990	1760
	16	0.065	1.65	6930	495	34610	2454
3/8"	20	0.028	0.71	2110	150	11100	780
	18	0.049	1.24	3870	270	20340	1430
	16	0.065	1.65	5250	375	29150	2050
1/2"	22	0.028	0.71	1590	110	8190	575
	18	0.049	1.24	2820	200	14630	1045
	16	0.065	1.65	3880	270	20300	1430
5/8"	14	0.083	2.11	5100	360	26830	1890
	12	0.109	2.77	7030	495	36990	2600
	22	0.028	0.71	1230	85	6490	455
3/4"	18	0.049	1.24	1830	130	9510	675
	16	0.065	1.65	2480	175	13030	910
	14	0.083	2.11	3230	225	17010	1195
7/8"	12	0.109	2.77	4390	310	20040	1600
	22	0.028	0.71	870	60	4590	325
	18	0.049	1.24	1550	110	8190	575
1"	16	0.065	1.65	1820	130	9590	675
	14	0.083	2.11	2370	165	12480	875
	12	0.109	2.77	3190	225	16790	1175
1-1/4"	10	0.134	3.40	3890	280	20990	1475
	20	0.035	0.89	760	55	4010	280
	18	0.049	1.24	1070	70	5640	395
1-1/2"	16	0.065	1.65	1440	100	7590	530
	14	0.083	2.11	1870	130	9830	690
	12	0.109	2.77	2490	175	13130	925
2"	10	0.120	3.05	890	65	4880	340
	18	0.065	1.65	1190	85	6280	440
	14	0.083	2.11	1540	110	8110	570
2-1/2"	12	0.109	2.77	2050	145	10810	760
	18	0.065	1.65	890	65	4670	330
	14	0.083	2.11	1140	80	6010	425
3"	12	0.109	2.77	1020	105	7890	560
	18	0.065	1.65	710	50	3720	260
	14	0.083	2.11	910	65	4780	335
4"	12	0.109	2.77	1600	115	6330	445
	18	0.065	1.65	590	40	3090	215
	14	0.083	2.11	750	55	3980	280

Inoxidables del Bajío Soluciones para Crecer



Para más información visita:
www.inoxbajio.com.mx



Teléfonos:

01 (462) 62 511 38
01 (462) 62 517 51



Whatsapp:

(462) 254 77 09
(462) 595 59 68

Si tienes alguna duda o necesitas otro tipo de información,
ponte en contacto con nosotros.
inoxbajio1@prodigy.net.mx